

Vector Fast Frame Mini Light Box

VFF-LB-01-MINI-F

Vector Fast Frame™ Mini Light Box is an innovative, collapsible SEG light box that sets up in seconds. Utilizing the same features and functionality of our as our standard version, the Mini offers more portability and is perfect for promotions on tabletops and counters. The collapsible frame is slim at 3.125" and has pre-attached LED lights on the top and bottom of the frame. The light box holds seamless, easy-to-change silicone edge graphics (SEG), which are easily applied to the front and back. Graphics can be easily swapped out to deliver new messages so you can use the frame again and again! Vector Fast Frame Mini Light Box is lightweight, portable, and requires no tools for assembly. It packs down small, making travel and storage simple.



We are continually improving and modifying our product range and reserve the right to vary the specifications without prior notice. All dimensions and weights quoted are approximate and we accept no responsibility for variance. E&OE. See Graphic Templates for graphic bleed specifications

features and benefits:

Features and benefits:

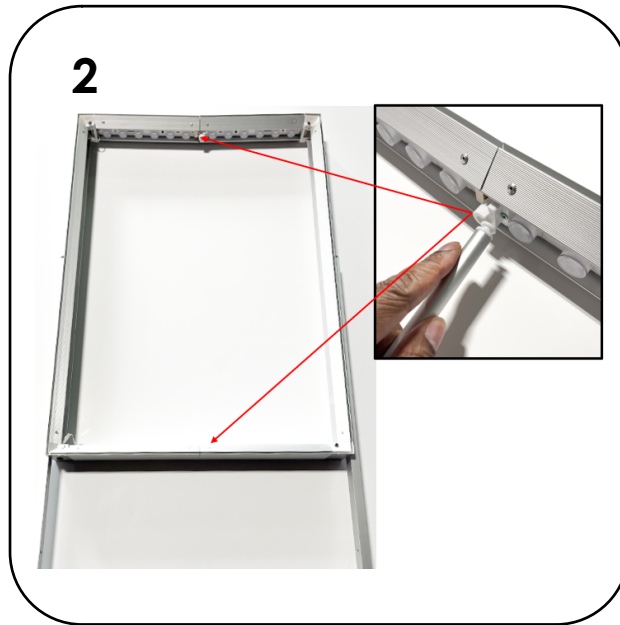
- Collapsible, slim light box banner
- Assembles in seconds
- Seamless and easy to change SEG push-fit graphics
- Silver frame
- Front and back graphics available
- Two backlit graphic material options available
- Highly portable and breaks down easy
- Includes carry bag
- Five-year LED light warranty
- One-year limited warranty against manufacturer defects

dimensions:

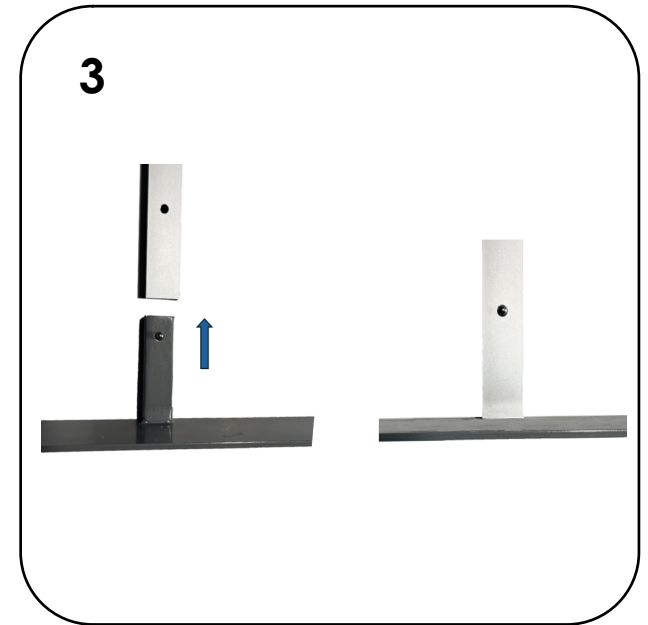
Hardware	Shipping
<p>Assembled unit:</p> <p>25.0625" w x 43.625" h x 15.75" d 637mm w x 1108mm h x 400mm d Approximate Weight: 9 lbs / 4.1 kg</p>	<p>Packing case(s): 1 Box</p> <p>Shipping Dimensions: 46" L x 6" H x 5" D 1168mm x 152mm x 127mm</p> <p>Approximate shipping weight: 14 lbs / 6.4 kg</p>
Graphics	
<p>Graphic material: Back-lit Textile (dye-sublimated fabric) or Intensity (UV/LED printed)</p>	
<p>Refer to related graphic templates for more information Visit:</p> <p>https://www.theexhibitorshandbook.com/downloads/download-graphic-templates or click here</p>	
	additional information:



1
Extend frame outward as shown.



2
Install the center support rod

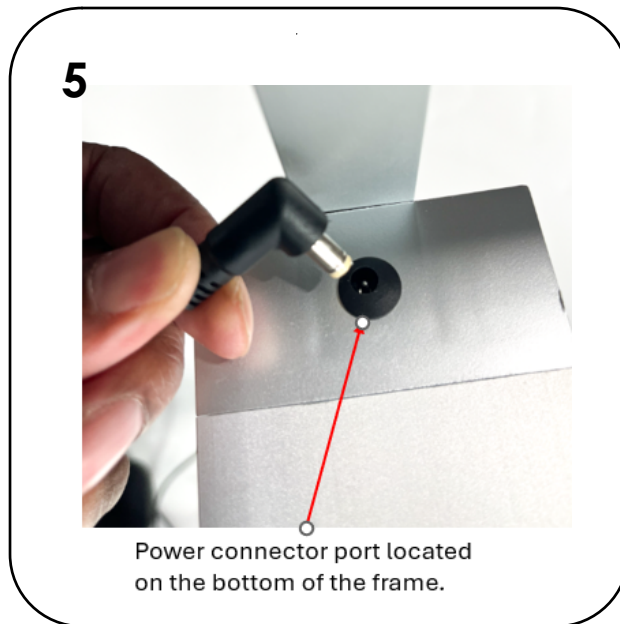


3
Install both feet



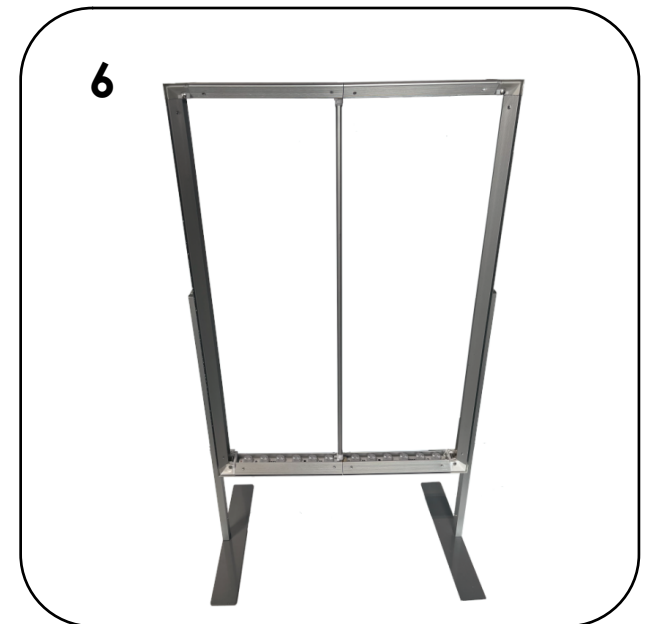
4
Sticker indicates which side of the frame the power plug connector port is located.

The power port is located on the bottom of the lower frame. A sticker on the side of the frame indicates which side.



5
Power connector port located on the bottom of the frame.

Plug power cord in the port located on the bottom of the frame.

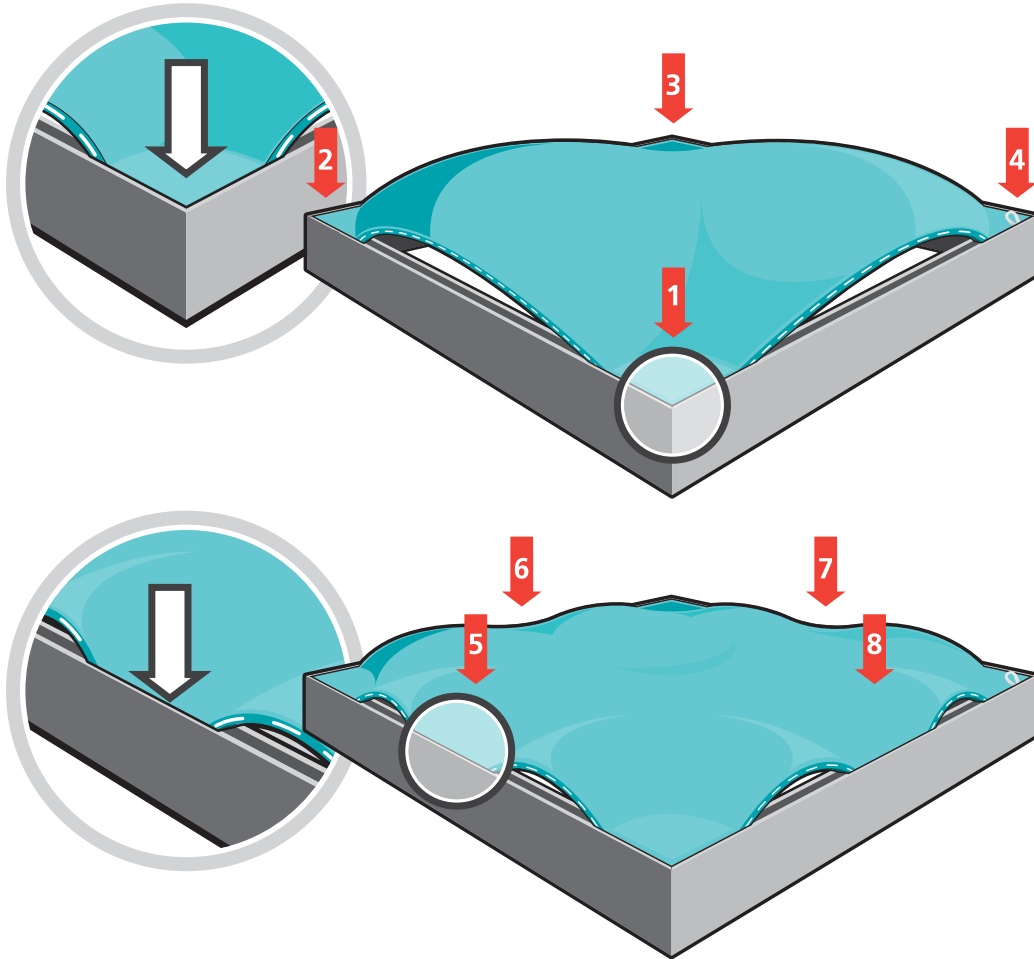


6
Hardware assembly complete. Install the SEG graphic.

How to Apply & Remove Graphics

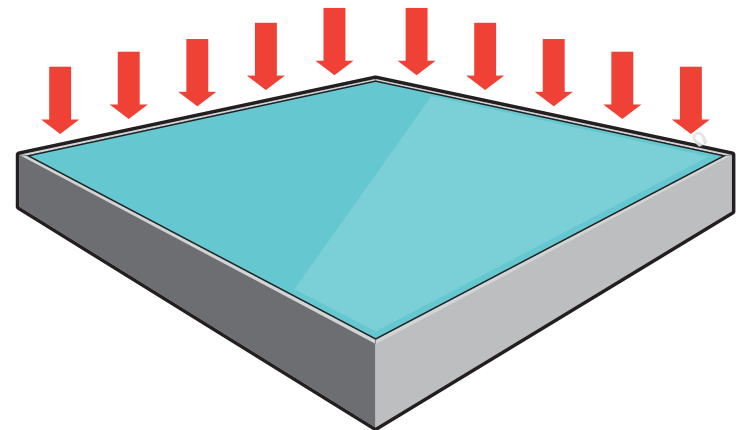
Installation and removal of SEG graphics is easy!

Installation: Push the SEG bead into each corner of the frame (1-4) with your thumb, then push the SEG bead into the middle of the run (5-8) and work your way around the perimeter of the frame until all beading is pushed in properly; if necessary, go around the perimeter again to ensure beading is secure in the extrusion profile.



Note: Keep the set up area clean by using a drop cloth, washing hands before set-up or by wearing gloves.

Removal: Use the pull tab located on the graphic and gently pull the graphic from the frame, going around the perimeter.



Graphics Storage & Care

Graphics should be folded with the graphic facing inward and stored in a zip lock /sealable plastic bag. Spot clean by wiping with a damp white cloth. If washing is necessary, use a commercial size front-loading washing machine, gentle cycle with cool water. Line dry flat. Dry cleaning is NOT recommended to prevent shrinkage.