

# NF16-3

**SET UP INSTRUCTIONS:**

- 1. CONNECT BOTTOM AND TOP RAILS FOLLOWING THE LABELS
- 2. CONNECT SIDE RAILS
- 3. CLEAN THE FRAME AND PLACE THEM ON CLEAN PLACE
- 4. CAREFULLY REMOVE FABRIC COVER FROM BAG
- 5. PLACE COVER AROUND THE BOTTOM OF THE FRAME
- 6. PULL COVER CAREFULLY UP TO THE TOP
- 7. CLOSE ALL ZIPPERS
- 8. ADJUST FABRIC AROUND THE FRAME
- 9. CONNECT CABLE HARNESS TO THE EYEBOLTS

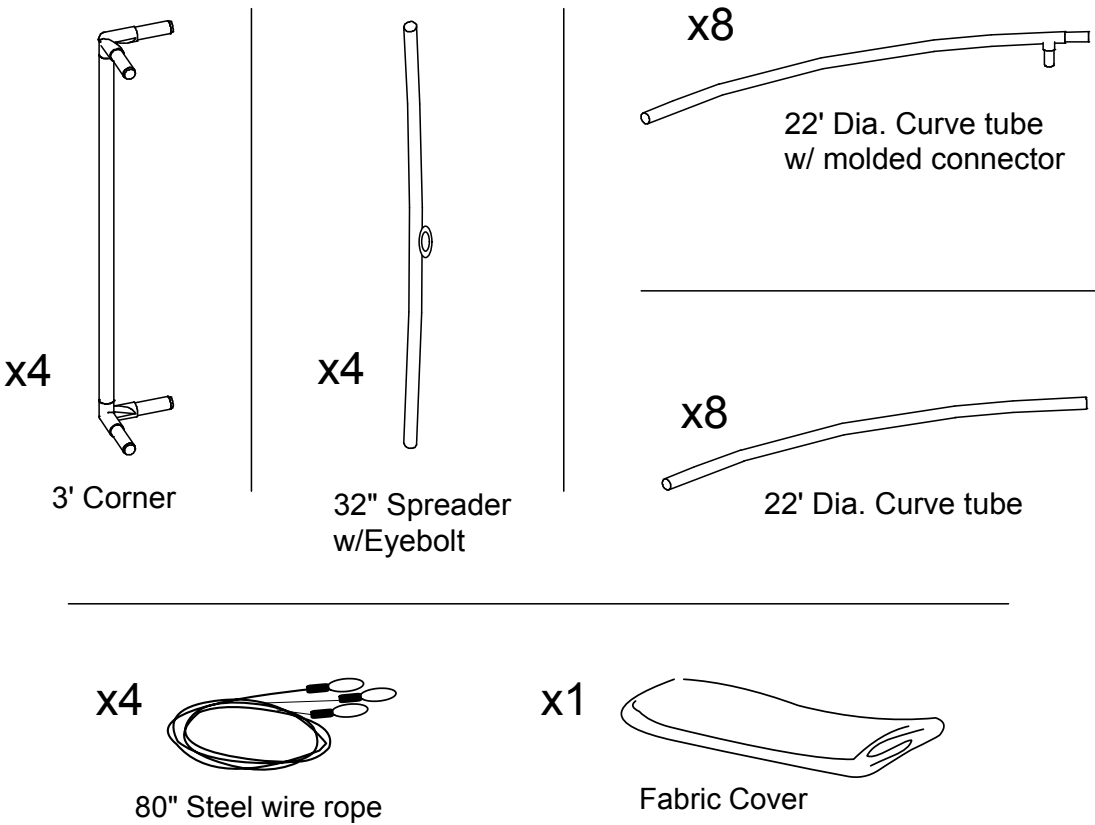
**BREAK DOWN INSTRUCTIONS:**

REVERSE SET-UP STEPS TO BREAKDOWN FRAME

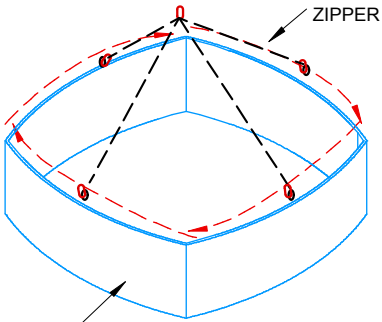
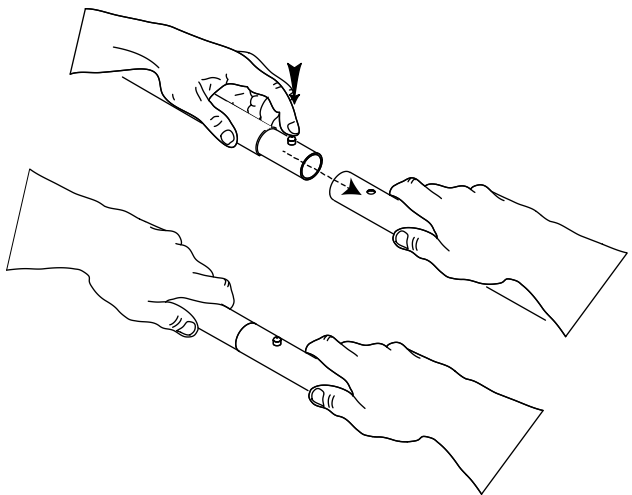
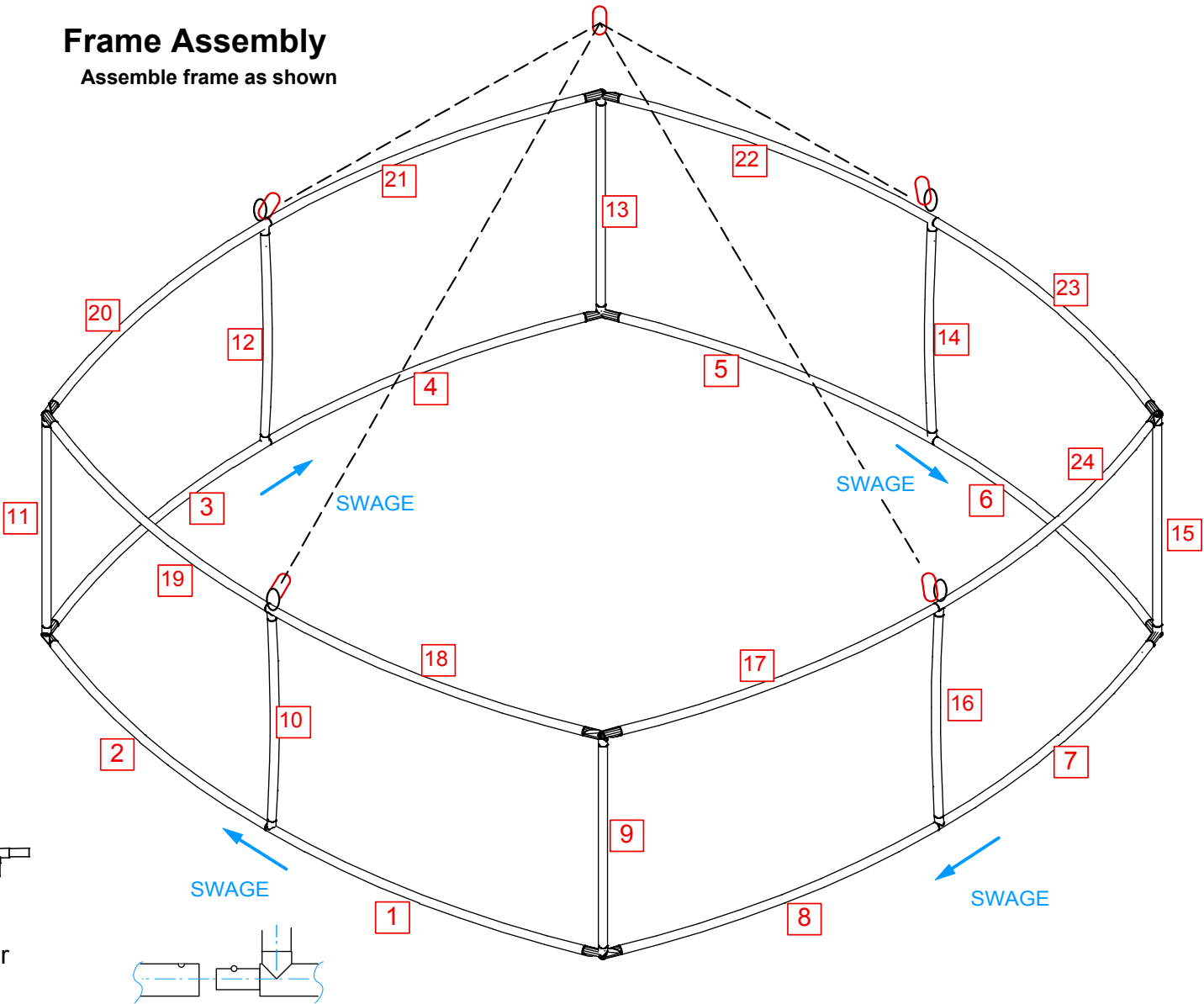
**FABRIC CARE INSTRUCTIONS:**

- 1. UNZIP COVER ZIPPERS
- 2. CAREFULLY REMOVE FABRIC COVER
- 3. CLOSE ALL ZIPPERS
- 4. FOLD OR ROLL NEATLY
- 5. PLACE FABRIC IN COVER BAG

**Frame parts**



**Frame Assembly**  
Assemble frame as shown



**Fabric Cover**  
GRAPHIC SIZE: 106" x 36"(V)  
Fabric: 4417 (4) Panels  
Add a 2" bleed on all sides  
PILLOWCASE CONSTRUCTION