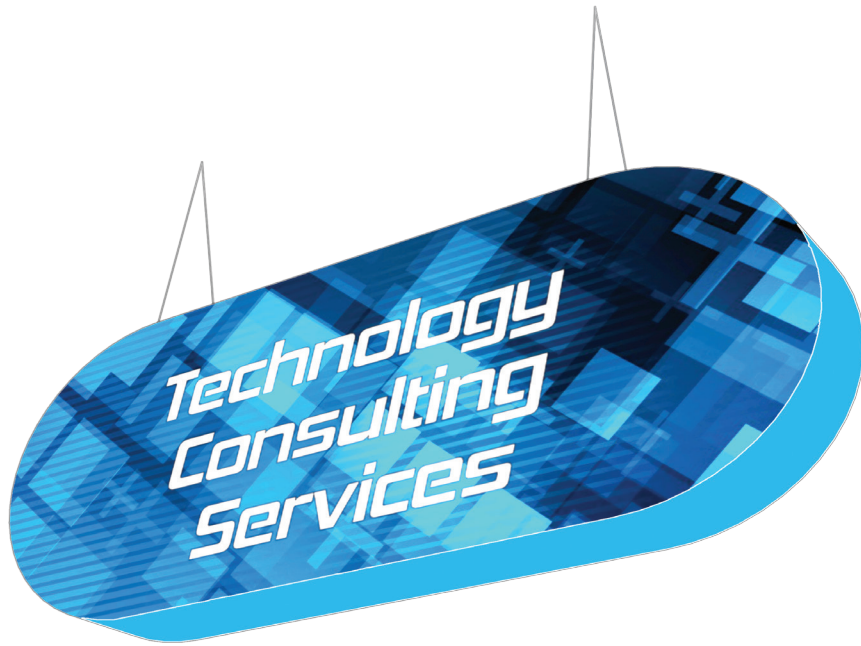


Formulate Master 3D Hanging Structures: Capsule

CAPSULE-10-BL

Formulate® tension fabric hanging structures are made in the USA and are of the utmost quality and durability. Formulate combines state-of-the-art zipper pillowcase dye-sublimated stretch fabric coverings with advanced, lightweight aluminum structures to provide unique design, functionality, and style.



We are continually improving and modifying our product range and reserve the right to vary the specifications without prior notice. All dimensions and weights quoted are approximate and we accept no responsibility for variance. E&OE. See Graphic Templates for graphic bleed specifications.

features and benefits:

- 10' shapes are constructed with 30mm (1.25") tubes and push button connectors for simple assembly.
- 14' shapes and over are constructed with 50mm (2") tubes and internal expanding spigot connectors for unmatched structural integrity
- Easy to store and ship
- Quick to set up
- One zipper pillowcase fabric graphic
- Lifetime limited hardware warranty against manufacturer defects

dimensions:

Hardware

Assembled unit:

120"w x 48"h x 18"d

3048mm(w) x 1219mm(h) x 457mm(d)

Approximate weight:

72 lbs / 33 kgs

Shipping

Packing case(s):

2 expandable cardboard boxes

Shipping dimensions:

Expandable cardboard box length (l) may vary

45-98"l x 16"h x 16"d

1143-2489mm(l) x 407mm(h) x 407mm(d)

Total shipping weight:

86 lbs / 39 kgs

Graphic

Refer to related graphic template for more information.

Visit:

www.exhibitors-handbook.com/graphic-templates

additional information:

Graphic material:

dye-sublimation zipper pillowcase fabric

Power Strips / Extension Cords

Not Included

Included In Your Kit

Tools, Components, & Connectors



ALLEN KEY SET x1



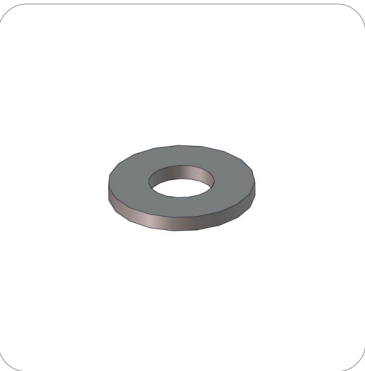
ES30 x8



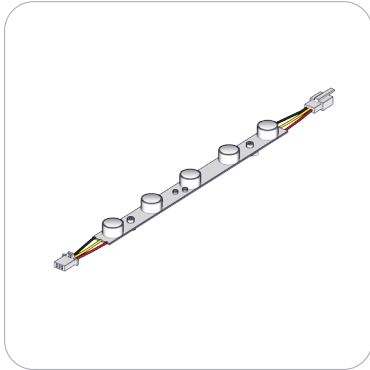
EYE BOLT 5/16"-18 x 3" x4



1/4"-20 x 7/8" SET SCREW x24



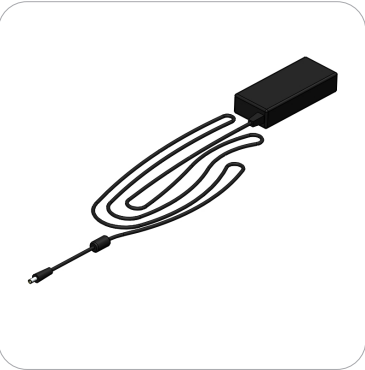
WASHER x24



LED-WHT-DB-300 x28



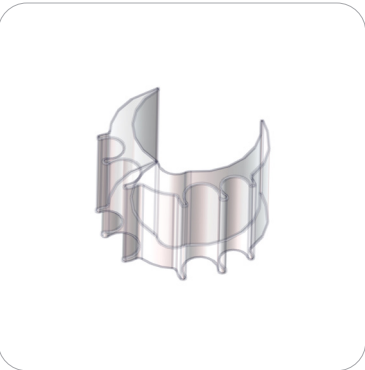
LED-DB-CL-DCJ-600 x4



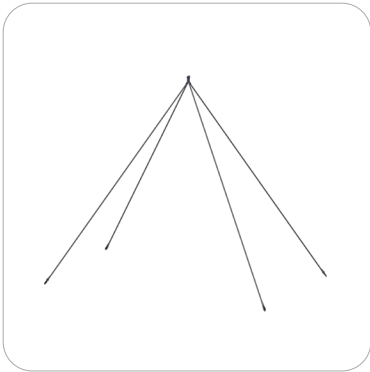
LED-DB-PWRSUPPLY x4



LED-DB-PWRCORD x4



WC-30T x8



CH-SP4-HD-10 x1

Graphics



CAPSULE-10-BL-G x1

Included In Your Kit

Tubes & Extrusions



CAPSULE-10-BL-T1 x4



CAPSULE-10-BL-T2 x4



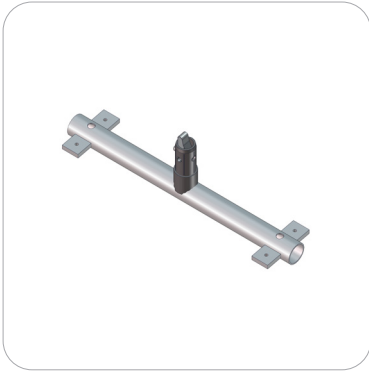
CAPSULE-10-BL-T3 x4



CAPSULE-10-BL-T4 x4



CAPSULE-10-BL-T5 x4



CAPSULE-10-BL-T6 x2



CAPSULE-10-BL-T7 x1



CAPSULE-10-BL-T8 x2



CAPSULE-10-BL-T9 x2



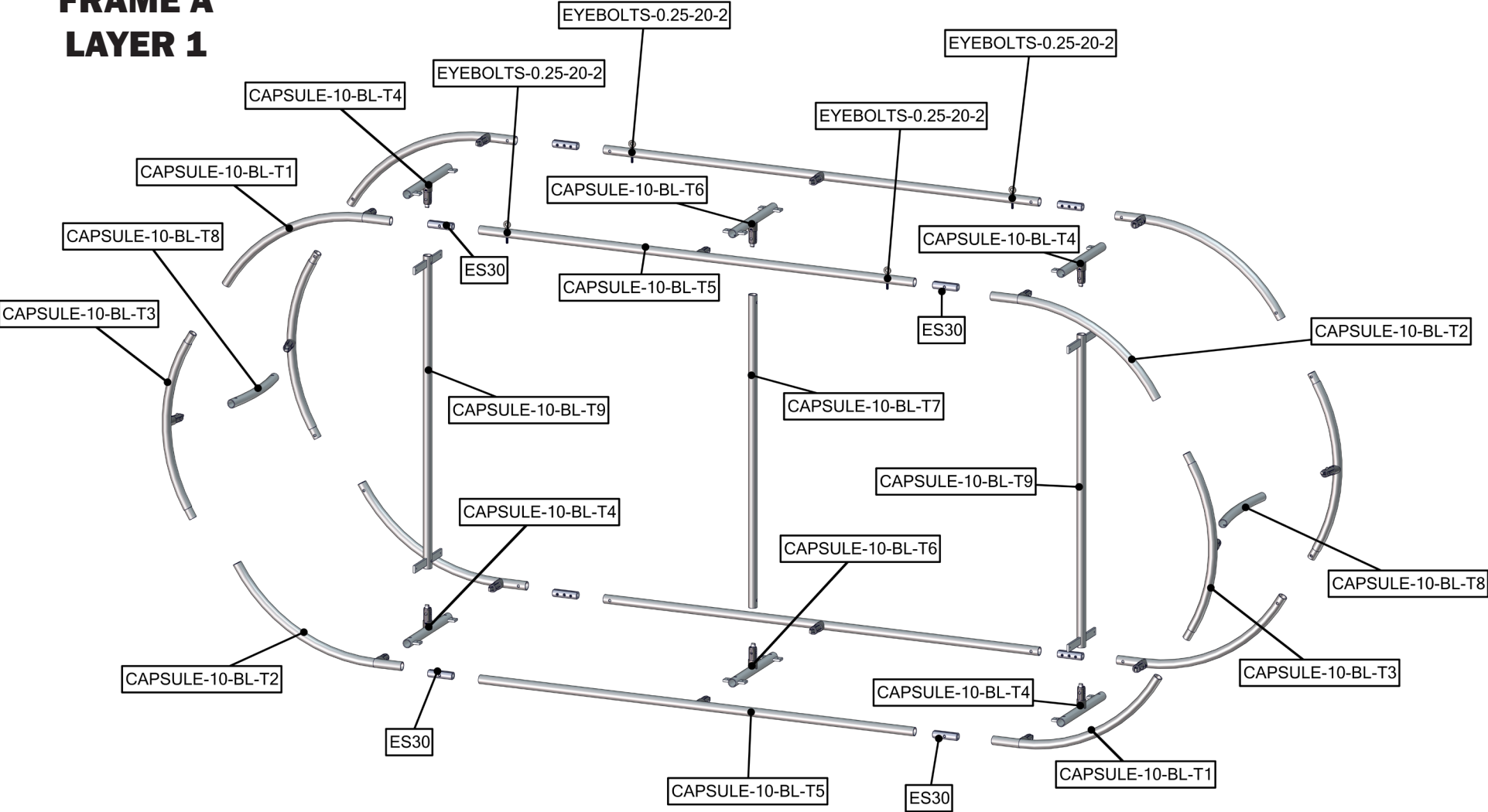
CAPSULE-10-BL-PE-1 x8



CAPSULE-10-BL-PE-2 x4

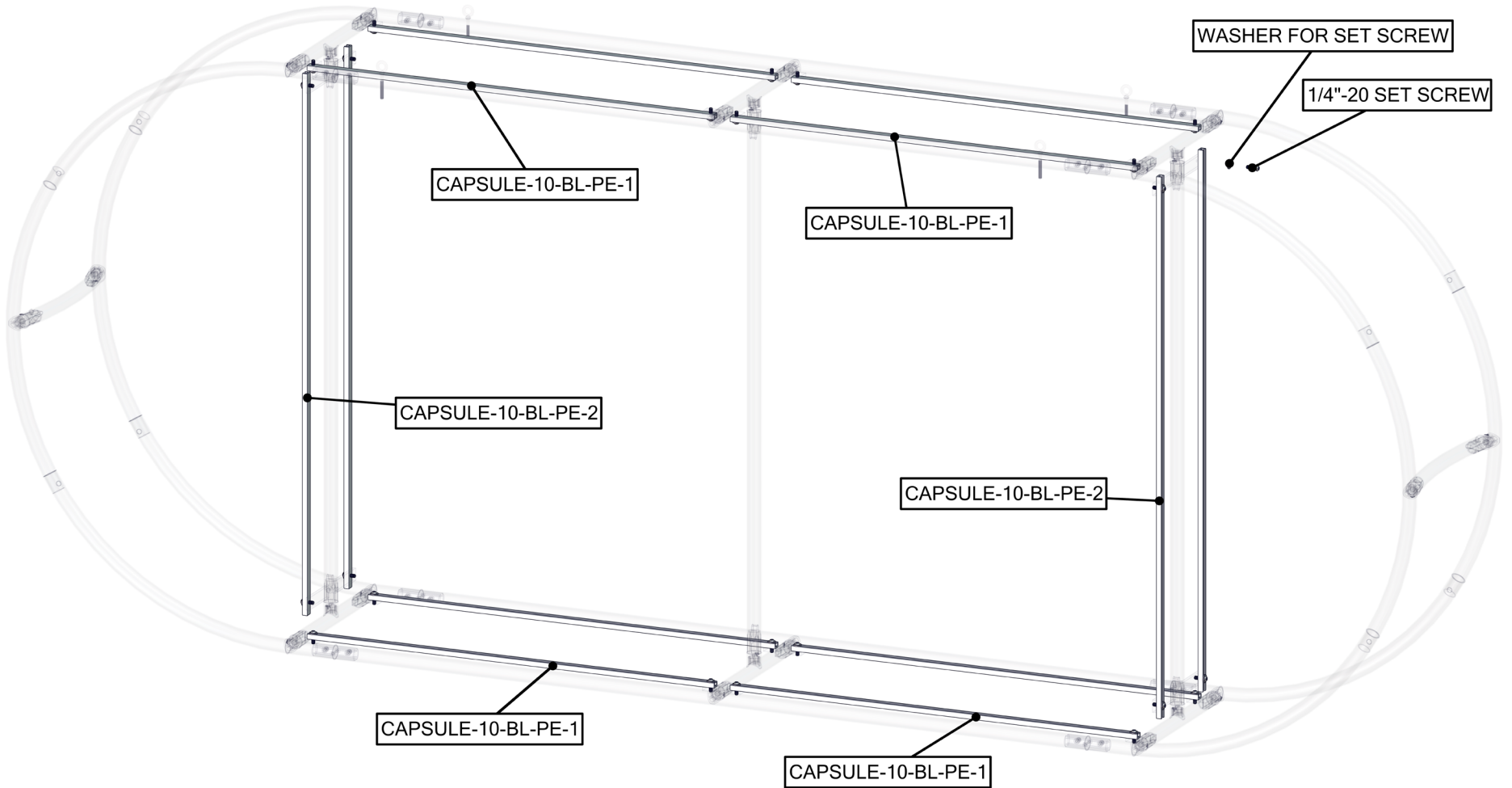
Exploded View

CAPSULE-10-BL FRAME A LAYER 1

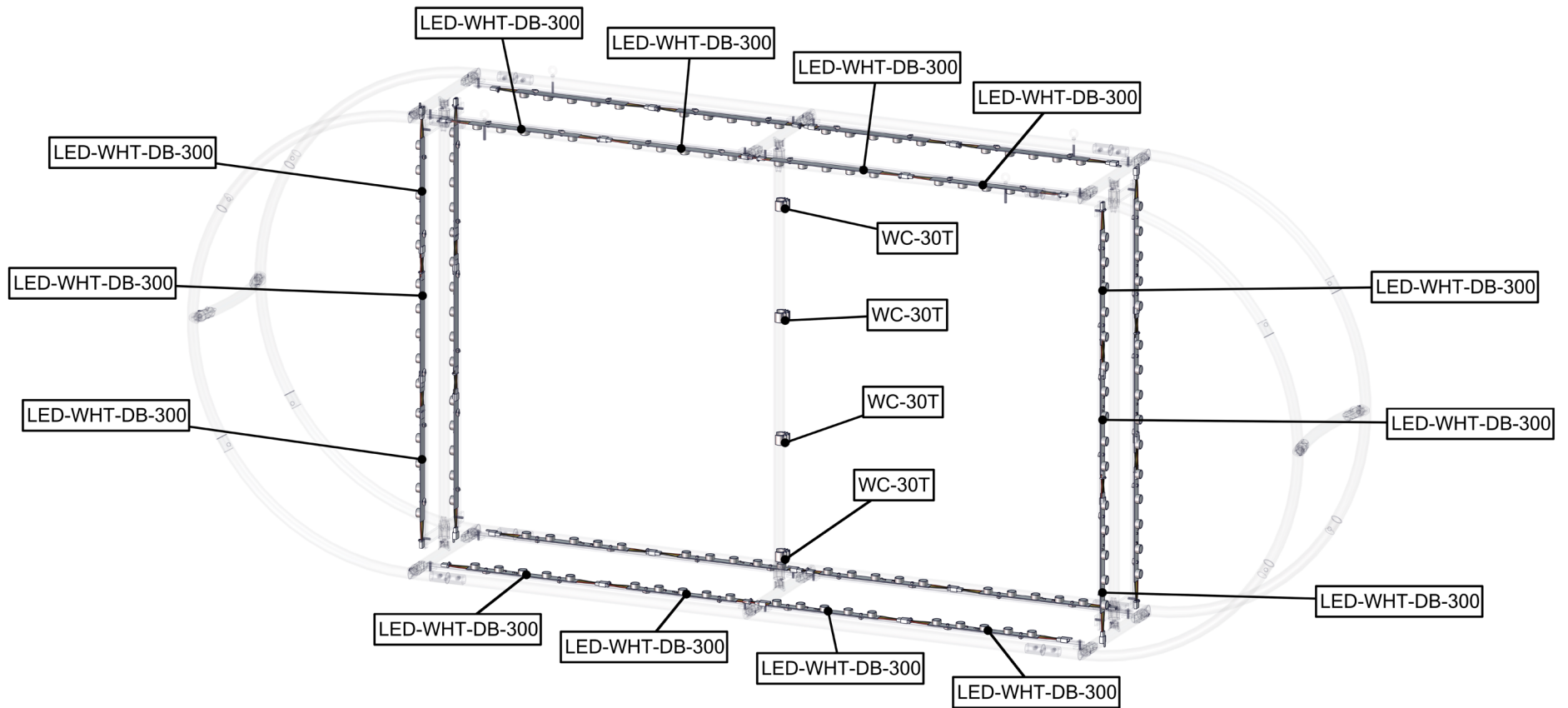


Exploded View

CAPSULE-10-BL FRAME A LAYER 2

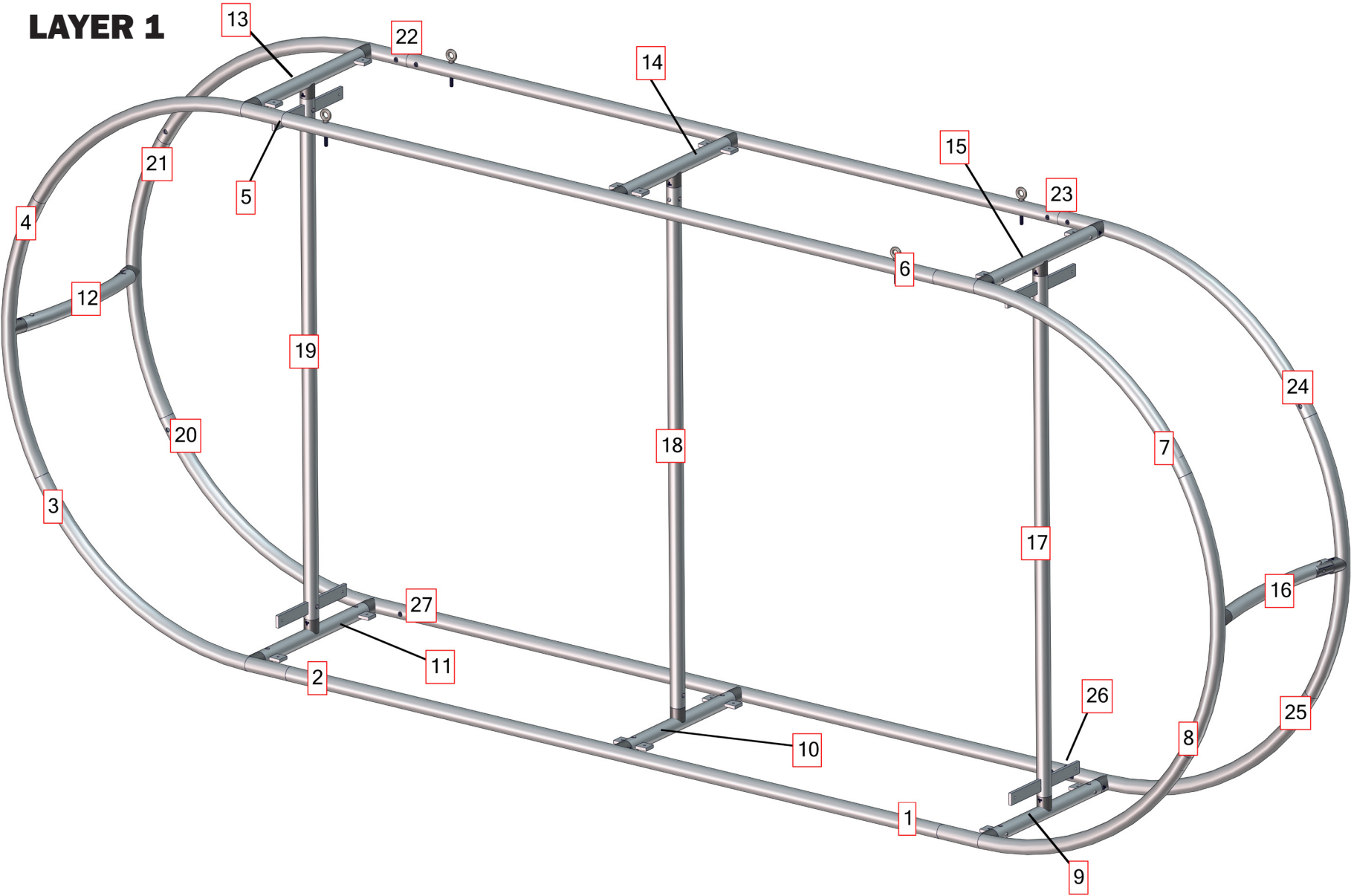


CAPSULE-10-BL
FRAME A
LAYER 3



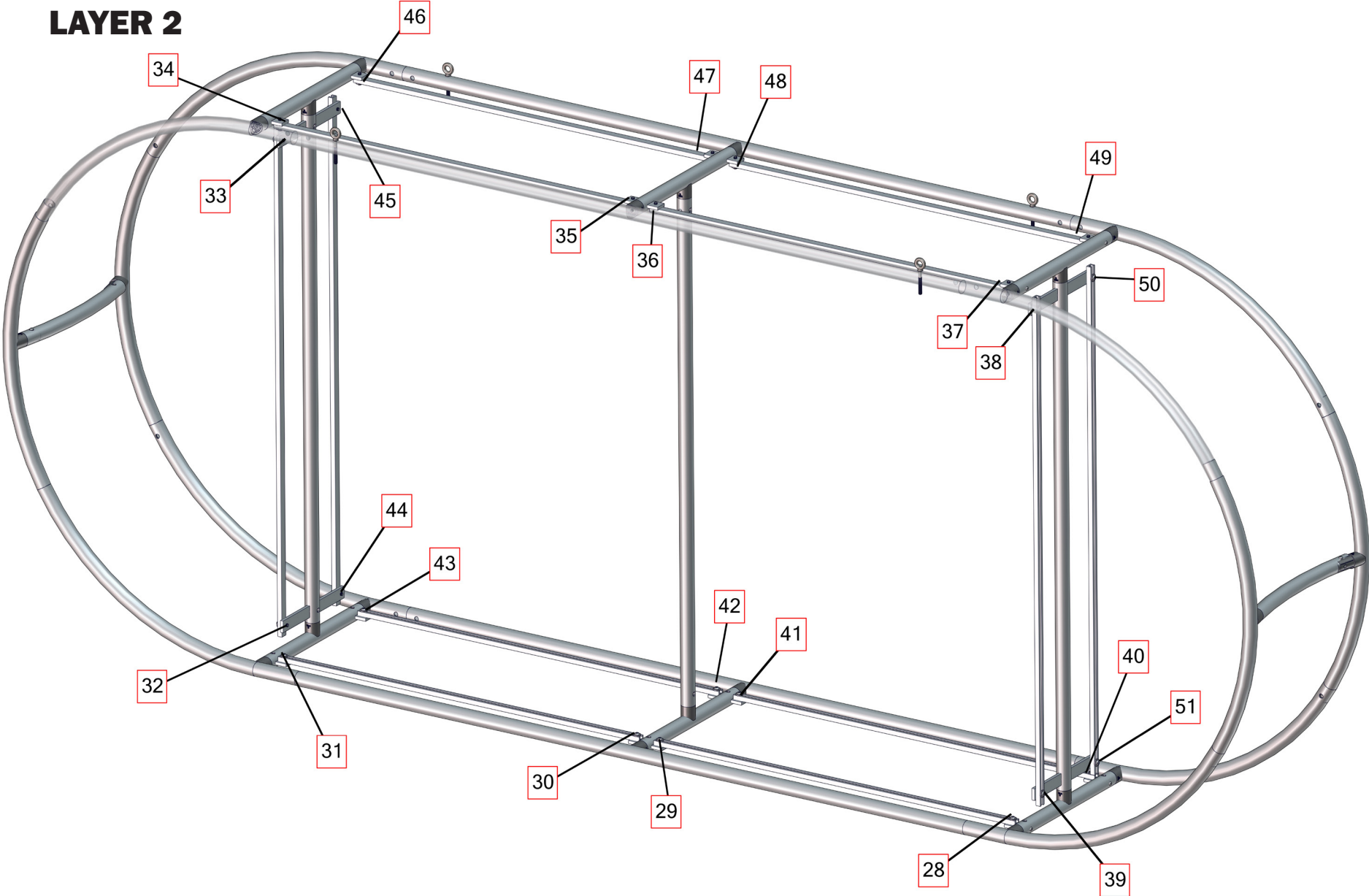
Labeling Diagram

CAPSULE-10-BL
FRAME A
LAYER 1



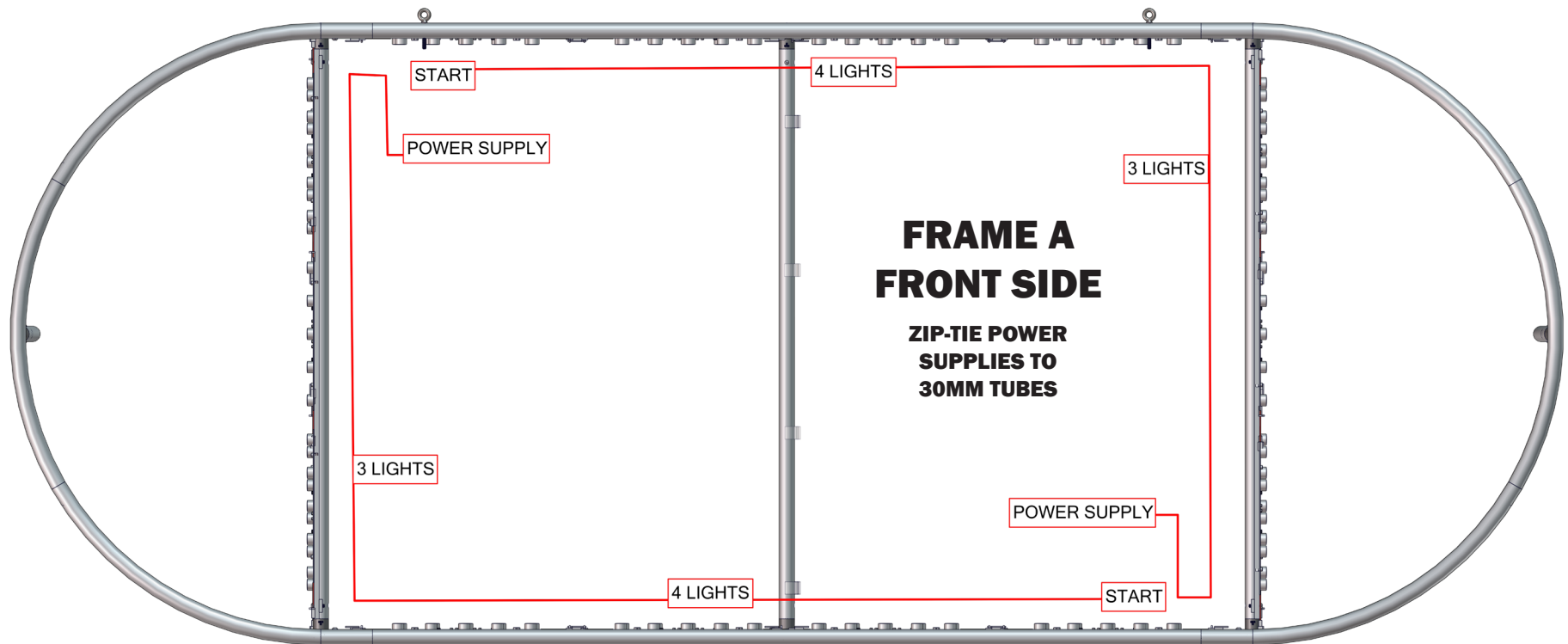
Labeling Diagram

CAPSULE-10-BL
FRAME A
LAYER 2



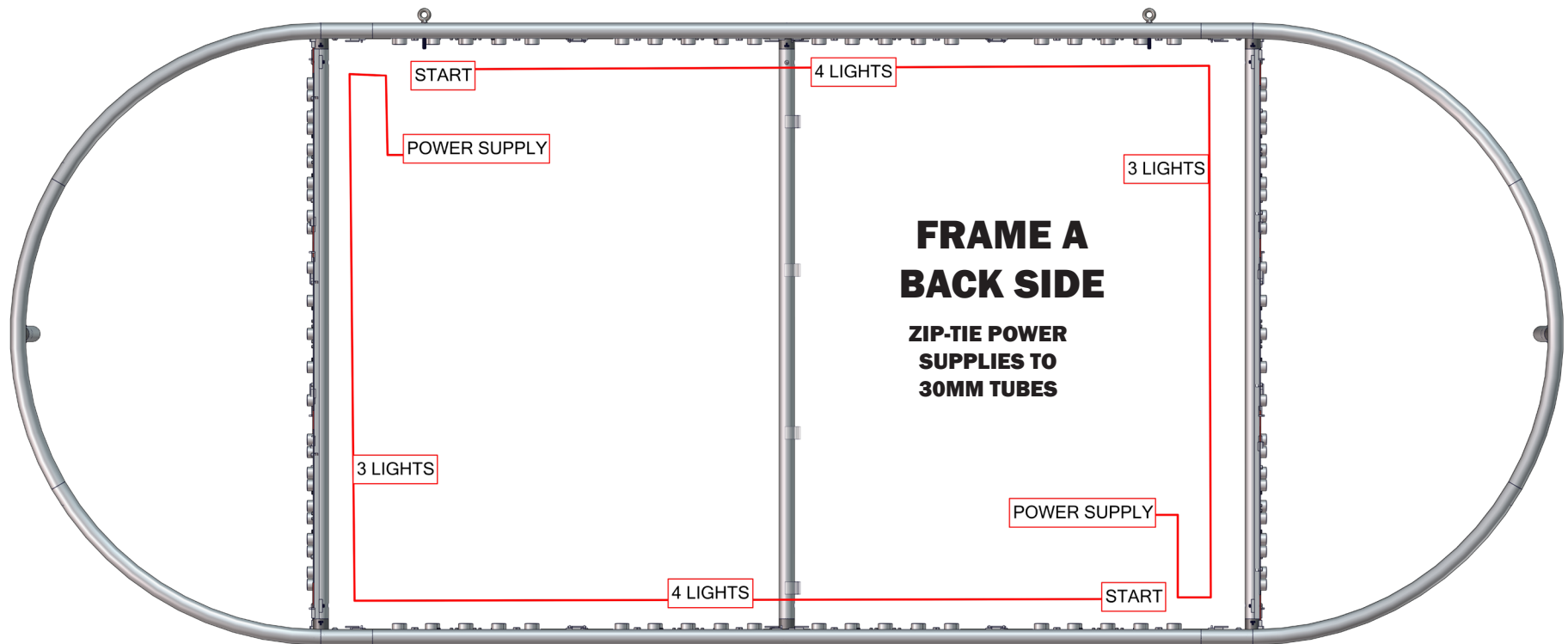
Internal Lighting Setup

CAPSULE-10-BL



Internal Lighting Setup

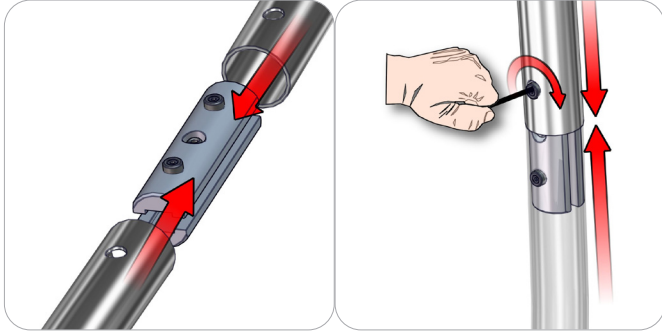
CAPSULE-10-BL



Connection Methods

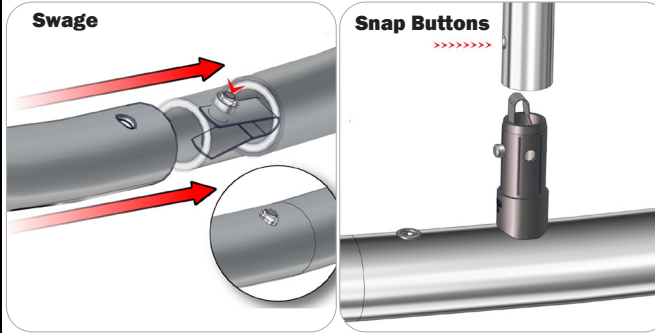
Formulate® structures use a number of different yet simple connection methods. Your kit will include one or more of the connection methods shown below. Steps within the Kit Assembly will reference a specific method for each connection point.

Connection Method 1: ES30 / ES50 / ES75



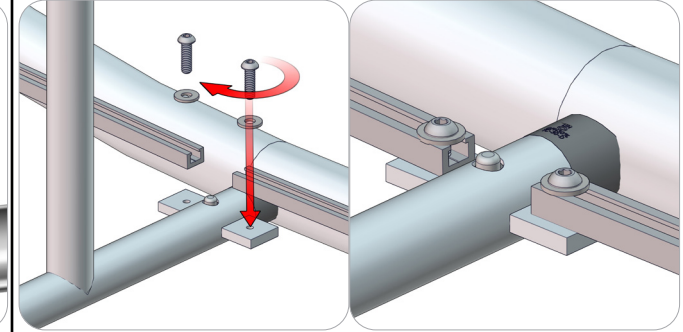
Compress the unlocked connector and slide one tube onto each end. Lock both screws carefully using your allen key tool. Be sure to lock securely, but do not over tighten.

Connection Method 2: Snap Buttons & Swage



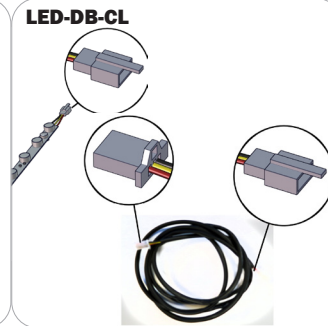
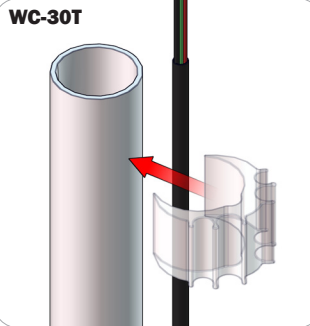
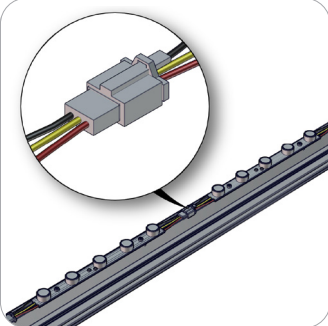
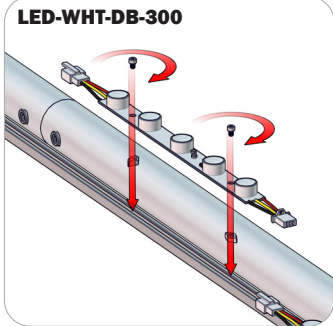
Locate the snap button on the connector or swage tube. Locate the hole on the corresponding tube. Press the snap button with your thumb and slide the tube and connector together so that the snap button snaps fully into the lock hole. To disassemble, press the snap button and pull apart.

Connection Method 3: PE to Custom Aluminum Threaded Plate



Hand fasten screws with washers carefully using your allen key tool. Be sure to fasten securely, but do not over tighten.

Connection Method 4: Internal Lighting Setup



Be sure to fully assemble all frames before using the internal lighting components. With the thumbscrews loosened, place the light strips on the frame, then hand tighten them in series, male to female connections with extension cords. Do not over tighten the thumbscrews. Snap on the wire management clamps and extrusions with the power cord extensions in place. Reference the Internal Lighting Diagram for more details.

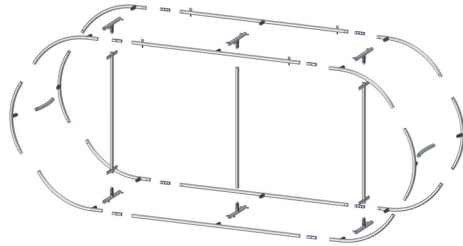
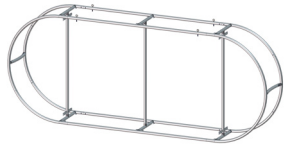
Kit Assembly

Step by Step

Step 1.

Gather the tube and spigot components to build Frame A. Using the provided ALLEN KEY SET, hand tighten the spigots. Assemble in the order as the Exploded View Layer 1 and Labeling Diagram Layer 1 pages instructs.

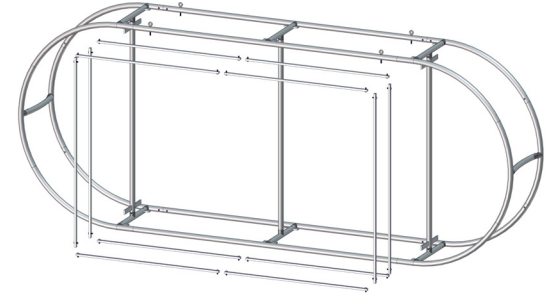
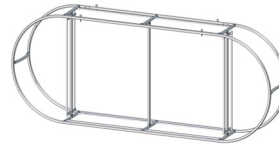
Refer to Connection Methods 1 and 2 for additional information.



Step 2.

Gather the PE Extrusions and hardware components. Using the provided ALLEN KEY SET, hand tighten the PE onto the inside perimeter of Frame A. Assemble in the order as the Exploded View Layer 2 and Labeling Diagram Layer 2 pages instructs.

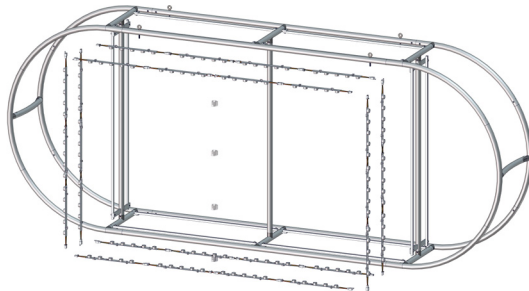
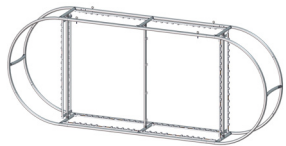
Refer to Connection Method 3 for additional information.



Step 3.

Gather the LED and power cable components to attach them onto the PE extrusions. Assemble in the order the Exploded View Layer 3 and Internal Lighting Setup Diagram pages instruct.

Refer to Connection Method 4 for additional information.



Step 4.

Locate the two part graphic pillowcase. With the pillowcase unzipped, encase the frame from the bottom to the top. Zip the pillowcase fabric closed at the top.

Setup is complete and ready to hang.

