

# Formulate Backwall Accent - 05

FMLT-WBWA-05

Formulate® Master Accents enhance the functionality of the Formulate Master 20' Straight Backwall and add more real estate for messaging too!



## features and benefits:

- Premium aluminum tube frames with snap button assembly
- Easy to store and ship
- Quick to set up
- Weighted feet for added stability
- One zipper pillowcase fabric graphic
- Lifetime limited hardware warranty against manufacturer defects
- 48.82" w tabletop included on interior of accent

## dimensions:

Hardware

Graphic

Assembled unit:  
51.82" w x 96.87" h x 103.65" d  
1316mm(w) x 2460mm(h) x 2632mm(d)

Refer to related graphic template for more information.

Approximate weight with cases:  
62 lbs / 28 kgs

Visit:  
[www.exhibitors-handbook.com/graphic-templates](http://www.exhibitors-handbook.com/graphic-templates)

Shipping

## additional information:

Packing case(s):  
1 OCH2

Graphic material:  
Dye-sublimation zipper pillowcase fabric

Shipping dimensions:  
57" l x 19" h x 19" d  
1448mm(l) x 483mm(h) x 483mm(d)

When included in a larger kit, a different packaging solution will be listed to accommodate all contents of the kit. Individual packaging no longer provided.

Approximate total shipping weight:  
89 lbs / 41 kgs

### Tabletop Colors:



silver black mahogany natural

2 person assembly recommended:



We are continually improving and modifying our product range and reserve the right to vary the specifications without prior notice. All dimensions and weights quoted are approximate and we accept no responsibility for variance. E&OE. See Graphic Templates for graphic bleed specifications.

# Included In Your Kit

Tools, Components & Connectors



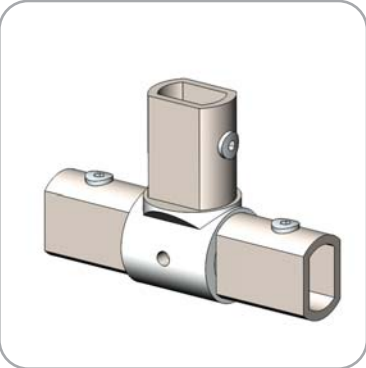
HEX KEY SET x1



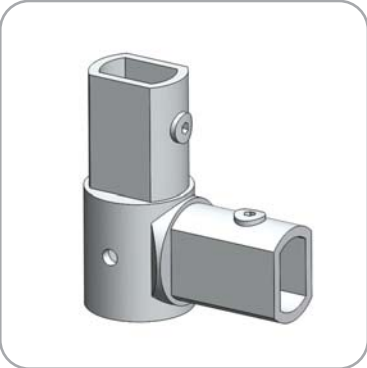
ES50 x6



ES50-2W x2



ES50-C-ES50-S-ASY x2



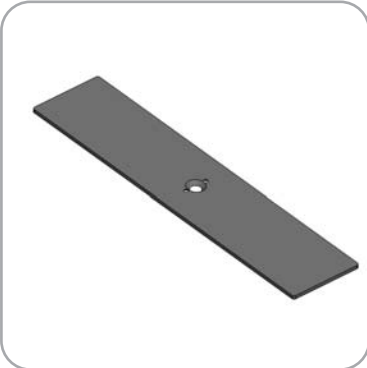
ES50-C-ES50-I x2



CT-FMLT-WBWA-05 x1



THUMB-SCREW-1 x4

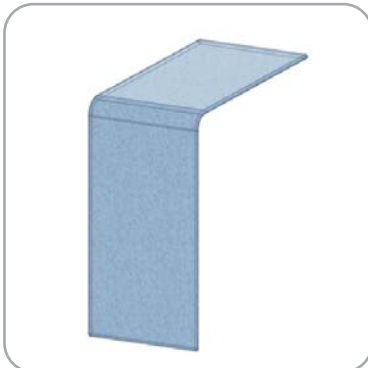


PLT-BP-LN114-S2-450 x2



LN114-SCRW x2

Graphics



FMLT-WBWA-05-G x1

# Included In Your Kit

Tubes



WBWA-05-T1 x2



WBWA-05-T2 x1



WBWA-05-T3 x1



WBWA-05-T4 x2



WBWA-05-T5 x2



WBWA-05-T6 x2



WBWA-05-T7 x3



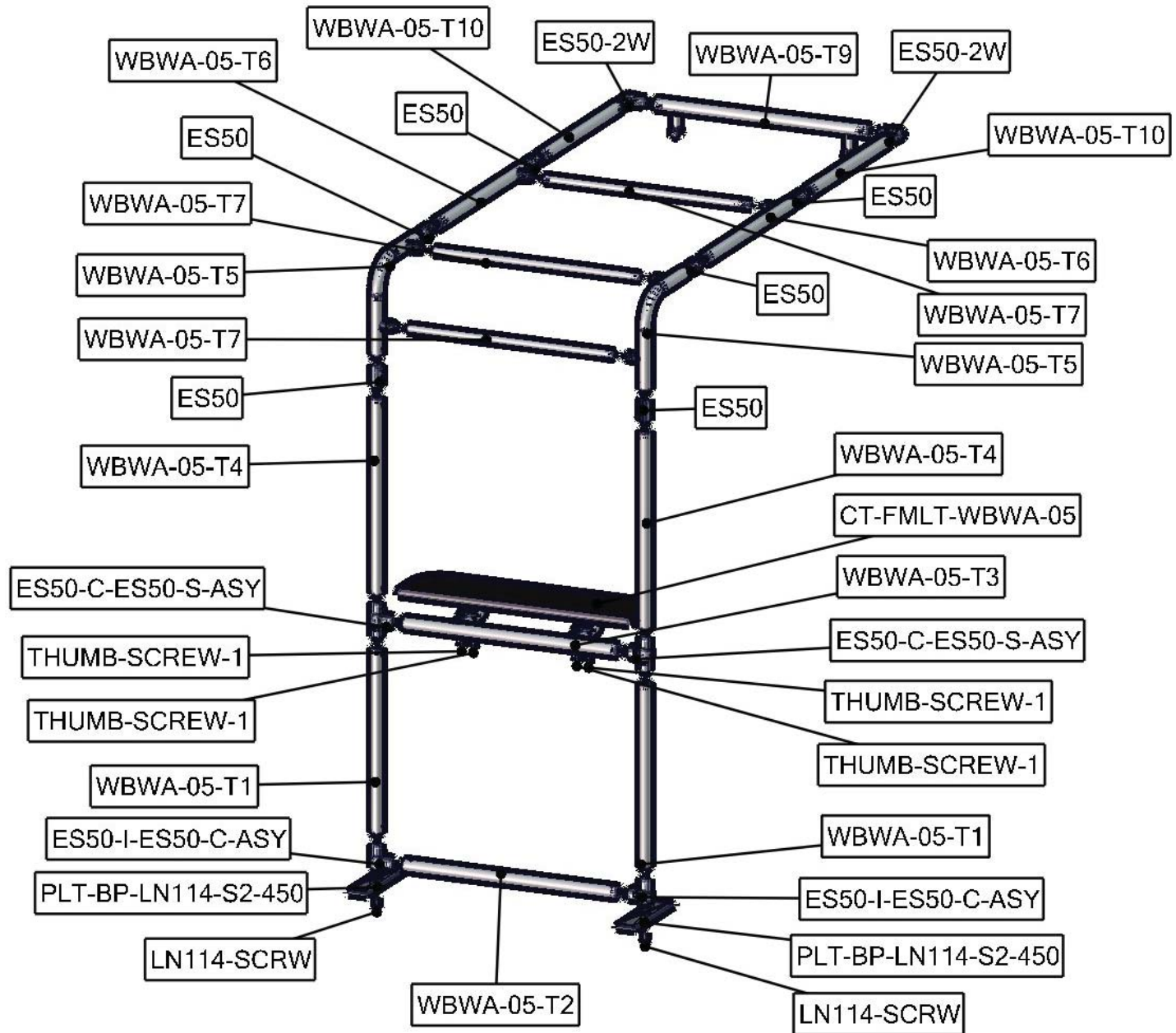
WBWA-05-T9 x1



WBWA-05-T10 x2

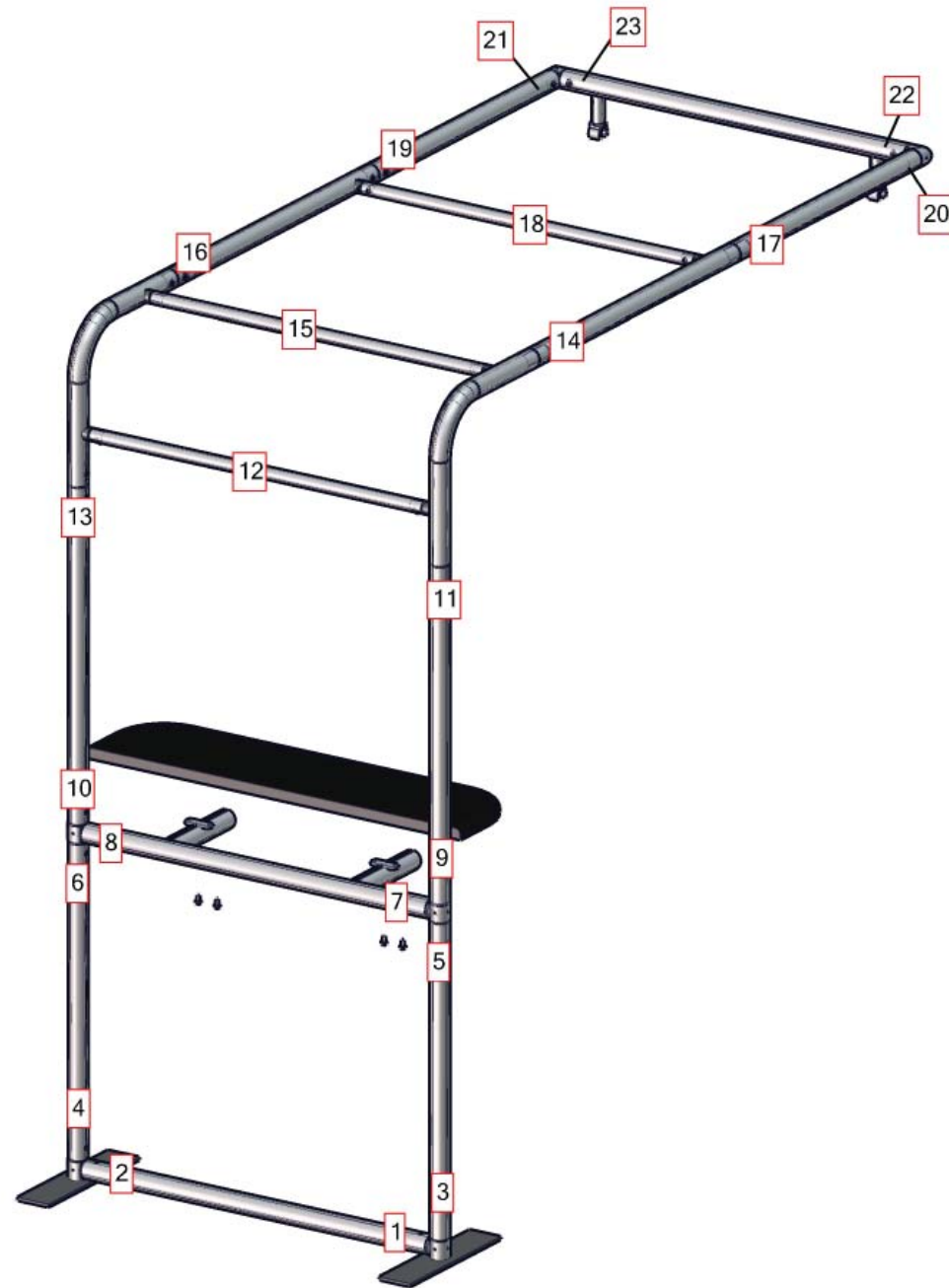
# Exploded View

FMLT-WBWA-05



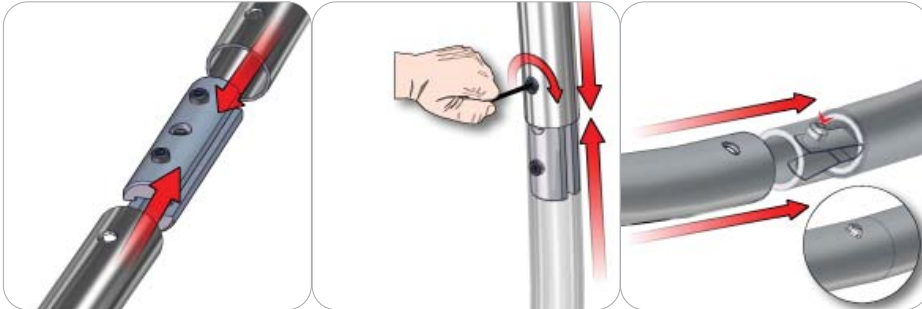
# Labeling Diagram

FMLT-WBWA-05



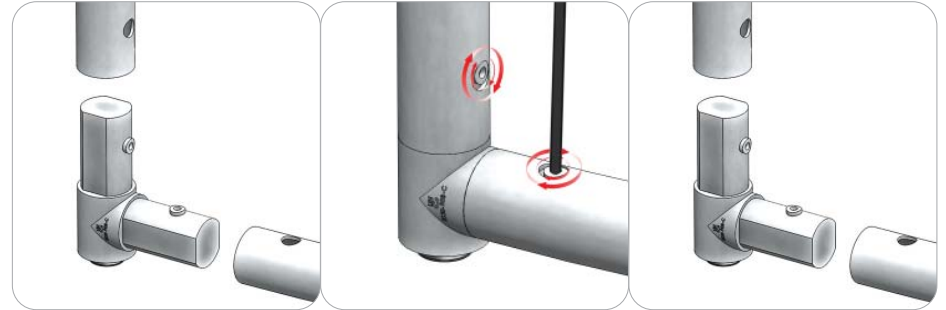
# Connection Methods

## Connection Method 1: ES30 / ES50 / SNAP BUTTONS



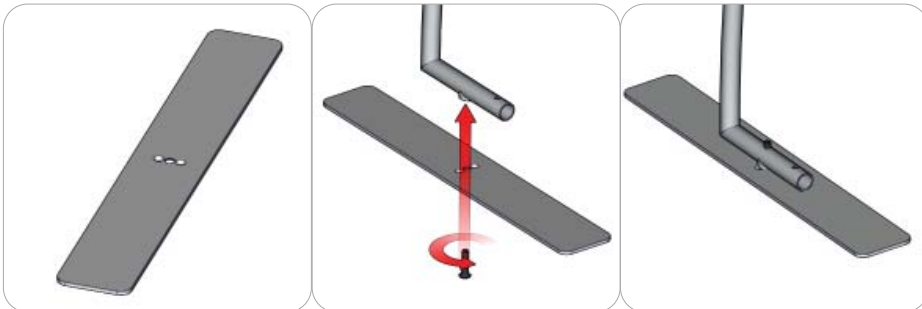
For spigot connections, compress the unlocked connector and slide into the tube lock access hole. Lock both screws carefully using your allen key tool. Be sure to lock securely, but do not over tighten. For snap button connections, locate the snap button on the connector or swage tube. Locate the hole on the corresponding tube. Press the snap button with your thumb and slide the tube and connector together so that the snap button snaps fully into the lock hole. To disassemble, press the snap button and pull apart.

## Connection Method 2: SILICONE EDGE FABRIC GRAPHIC



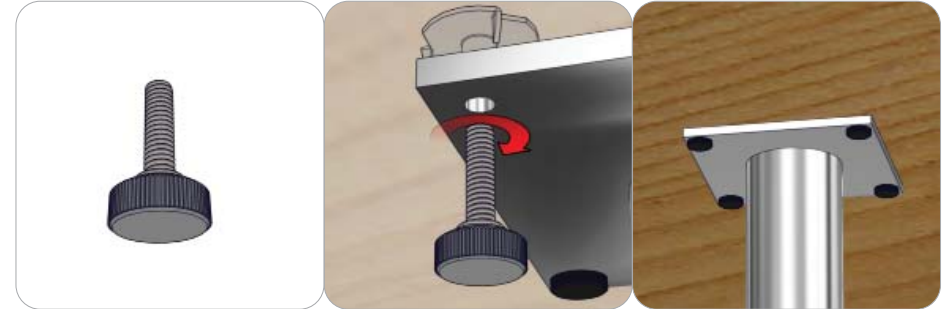
Compress one unlocked end of the connector and slide it through one tube end. Compress the other end of the connector and slide the second tube on. Lock both screws carefully using your allen key tool. Be sure to lock securely, but do not over tighten.

## Connection Method 3: ES30 / ES50 / SNAP BUTTONS



First, make sure you have the stabilizing base plate with the large counter sink hole facing down for a flush finish when inserting the screw from the under side. Second, fasten the plate onto the tube with the installed threaded insert. Use the provided allen key tool to make a tight fit. Do not over tighten. Loosen the screw to rotate the plate.

## Connection Method 4: Shelf / Thumb screw

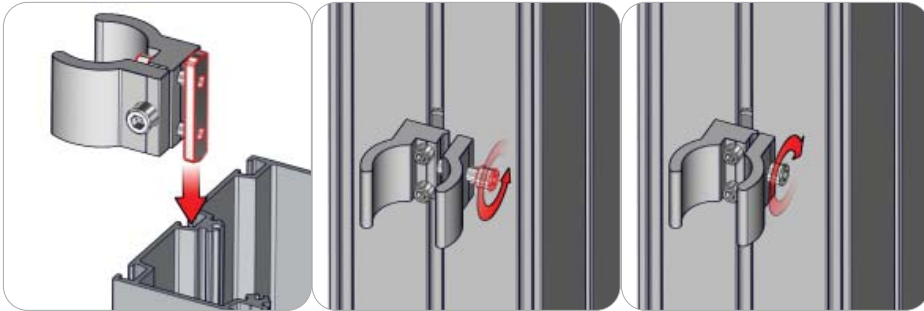


First, rest and align the under side of the shelf onto tube #3 mounting plates. Second, use the thumb screws provided to fasten the shelf onto tube 5 mounting plates.

# Connection Methods

## Connection Method 5: TC-30

---



First, loosen the channel bar with the two set screws on the inside of the tube clamp. Do not disassemble it. Slide the clamp channel bar into the desired extrusion channel. Once it is in the desired location, tighten the channel bar screws. Second, loosen the clamp with the side set screw. Do not disassemble it.

---

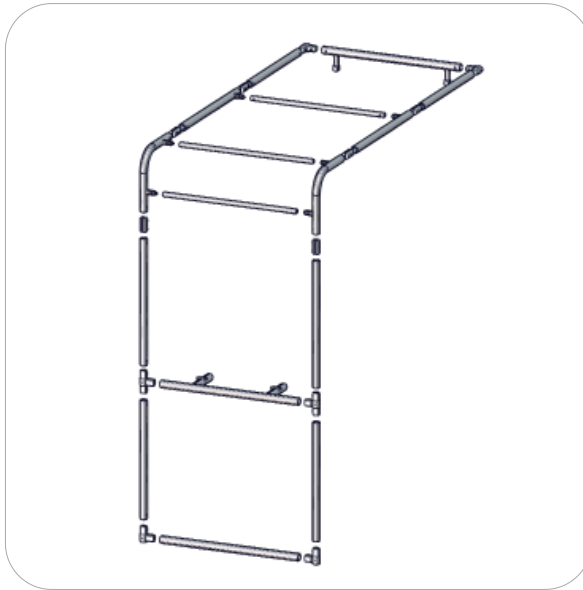
# Kit Assembly

## Step by Step

### Step 1.

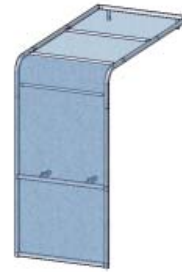
Gather the components to build the frame. Use the Exploded View and the Labeling Diagram for part labels.

Reference Connection Method(s) 1 and 2 for more details.



### Step 2.

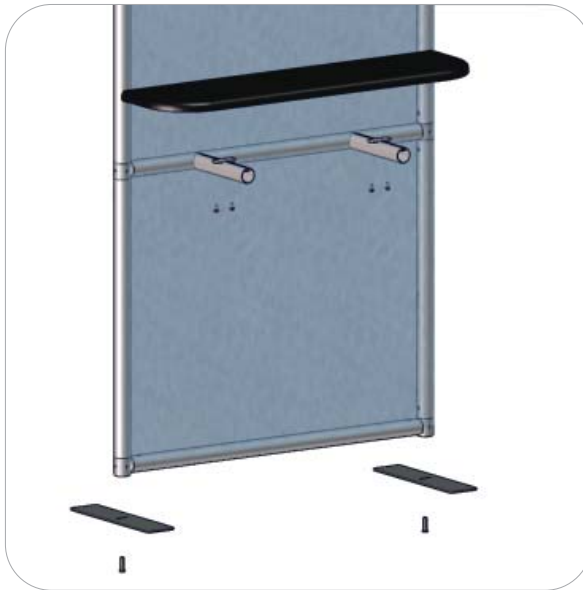
Pull the pillowcase graphic over the frame and zipper it closed. Make sure to have the tubes protruding through the holes of the fabric.



### Step 3.

Gather the components to build the shelf and the stabilizing bases. Use the Exploded View for part labels.

Reference Connection Method(s) 3 and 4 for more details.



### Step 4.

Attach the canopy to your backwall. Use the Exploded View for part labels.

Reference Connection Method(s) 5 for more details.

