

# Formulate Chip Wall - 02

## CHIP-WALL-02

Formulate® CHIP-WALL-02 is a potato chip shaped structure that stands 8' tall and is 9' 3" wide. It is an ideal structure to create a semi-private conference/meeting area or projection wall within a space.



## features and benefits:

- Easy to store and ship
- Quick to set up
- Weighted feet for added stability
- Lifetime limited hardware warranty against manufacturer defects

## dimensions:

### Hardware

Assembled unit:  
112.47" w x 76.11" h x 83.7" d  
2856mm(w) x 1933mm(h) x 2125mm(d)

Approximate weight:  
42 lbs / 20 kgs

### Graphic

Refer to related graphic template for more information.

Visit:  
<https://www.theexhibitorshandbook.com/download-graphic-templates>

### Shipping

Packing case(s):  
1 OCE-2 Case

Shipping dimensions:  
OCE-2: Expandable case length (l) may vary  
40" - 66" l x 18" w x 18" h  
1016mm-1677mm(l) x 458mm(w) x 458mm(h)

Approximate total shipping weight  
(includes cases & graphics):  
61 lbs / 28 kgs

## additional information:

Graphic material:  
dye-sublimation zipper pillowcase fabric

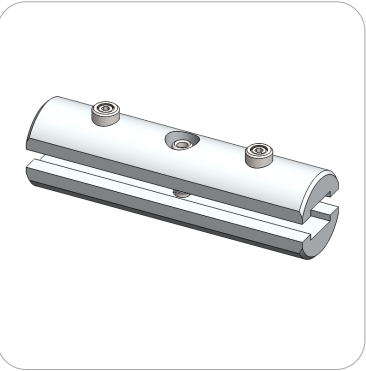
We are continually improving and modifying our product range and reserve the right to vary the specifications without prior notice. All dimensions and weights quoted are approximate and we accept no responsibility for variance. E&OE. See Graphic Templates for graphic bleed specifications.

# Included In Your Kit

Tools, Components,  
& Connectors

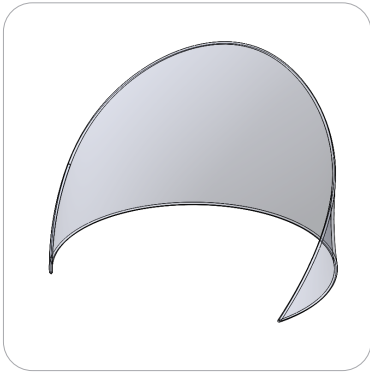


ALLEN KEY SET x1



ES30 x14

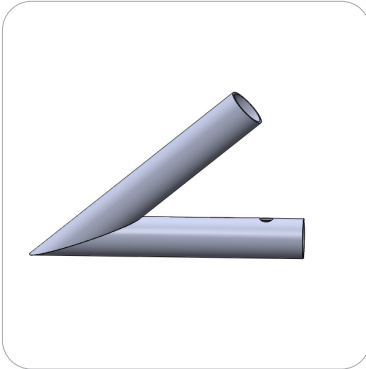
Graphics



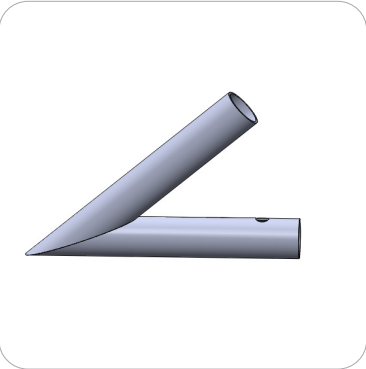
CHIP-WALL-02-G x1

# Included In Your Kit

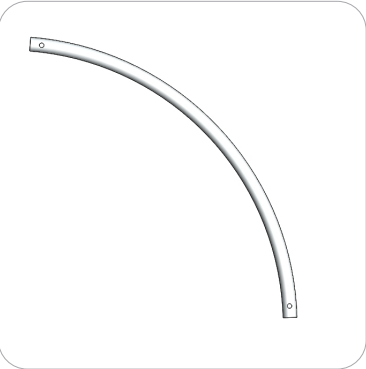
Tubes



CHIP-WALL-02-T1 x1



CHIP-WALL-02-T2 x1



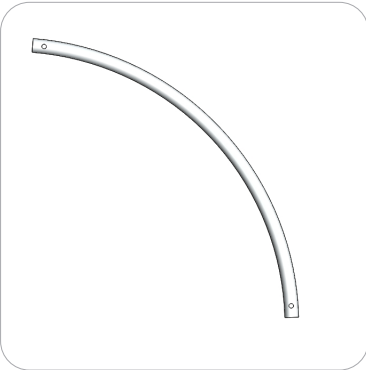
CHIP-WALL-02-T3 x1



CHIP-WALL-02-T4 x1



CHIP-WALL-02-T5 x1



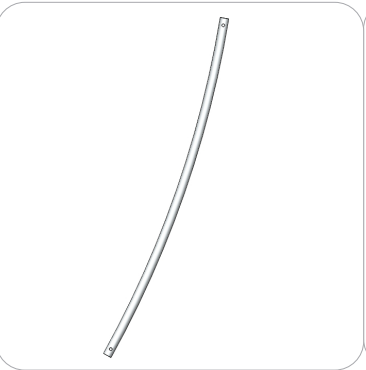
CHIP-WALL-02-T6 x3



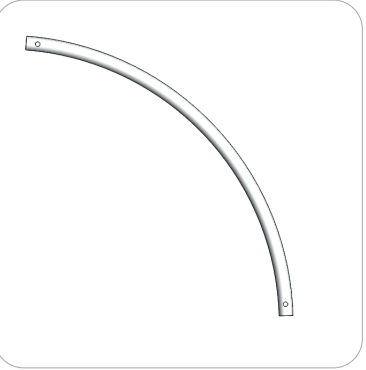
CHIP-WALL-02-T7 x1



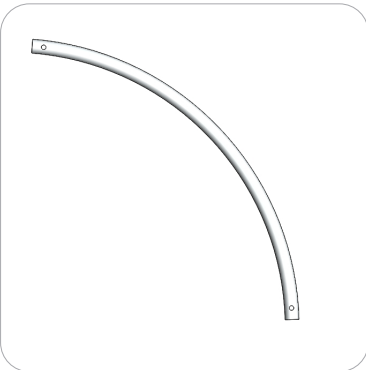
CHIP-WALL-02-T8 x1



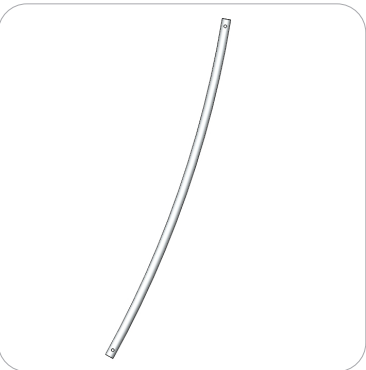
CHIP-WALL-02-T9 x1



CHIP-WALL-02-T10 x1



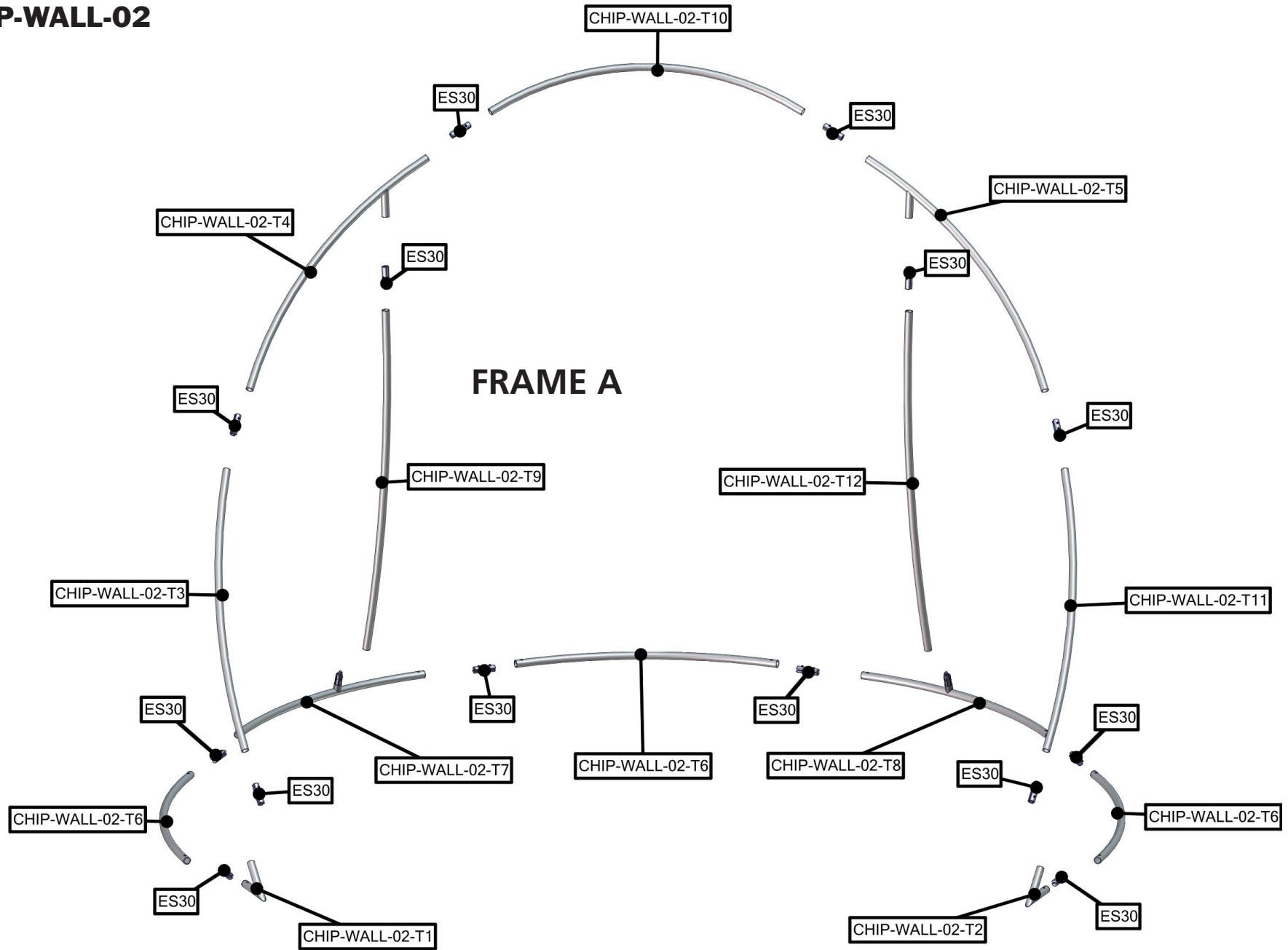
CHIP-WALL-02-T11 x1



CHIP-WALL-02-T12 x1

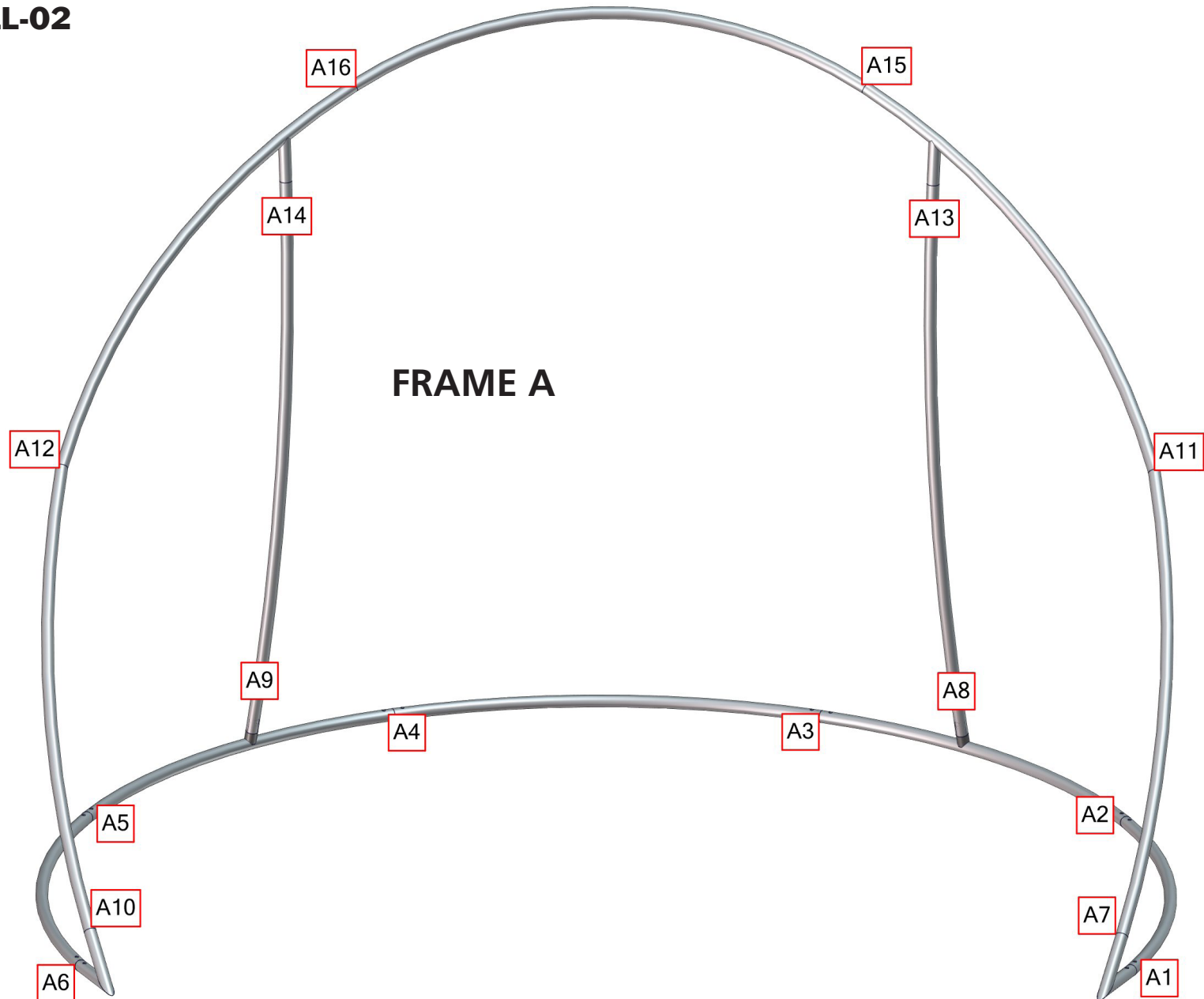
# Exploded View

## CHIP-WALL-02



# Labeling Diagram

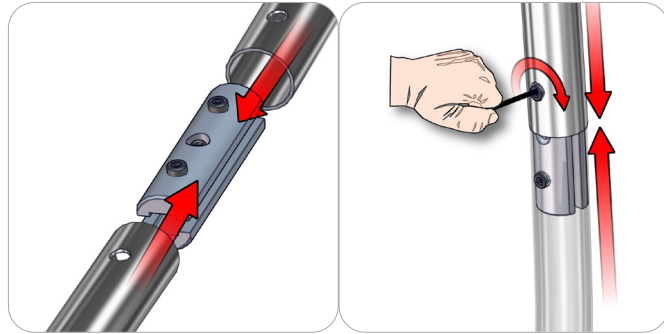
CHIP-WALL-02



# Connection Methods

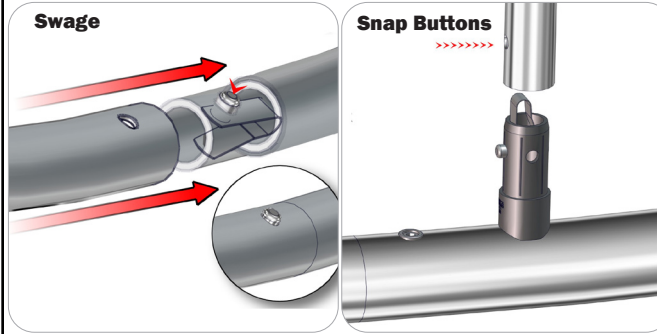
Formulate® structures use a number of different yet simple connection methods. Your kit will include one or more of the connection methods shown below. Steps within the Kit Assembly will reference a specific method for each connection point.

## Connection Method 1: ES30 / ES50 / ES75



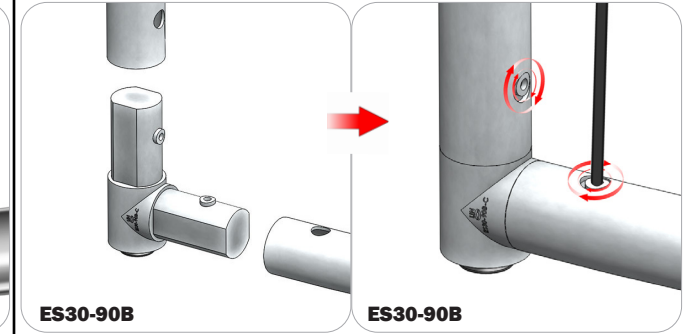
Compress the unlocked connector and slide one tube onto each end. Lock both screws carefully using your allen key tool. Be sure to lock securely, but do not overtighten.

## Connection Method 2: Snap Buttons & Swage



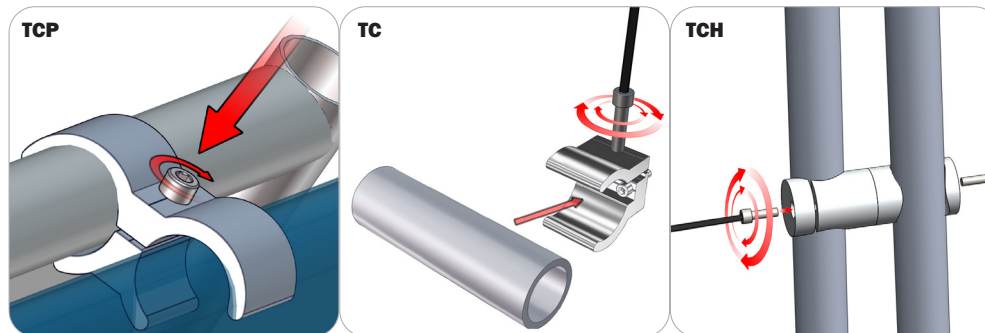
Locate the snap button on the connector or swage tube. Locate the hole on the corresponding tube. Press the snap button with your thumb and slide the tube and connector together so that the snap button snaps fully into the lock hole. To disassemble, press the snap button and pull apart.

## Connection Method 3: ES30-90B / ES30-I / ES30-C



Compress one unlocked end of the connector and slide it through one tube end. Compress the other end of the connector and slide the second tube on. Lock both screws carefully using your allen key tool. Be sure to lock securely, but do not overtighten.

## Connection Method 4: Tube Clamps



Be sure to fully assemble all frames before using clamps. With the clamp unlocked, place one tube of the first frame into the mouth of the clamp. Place the second tube (if applicable) into the second mouth of the clamp. With both frame's tubes in the clamp, be sure to lock securely, but do not overtighten.

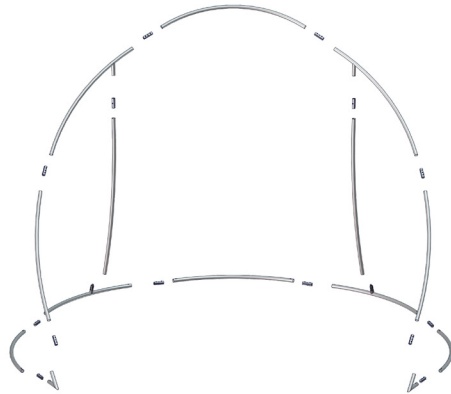
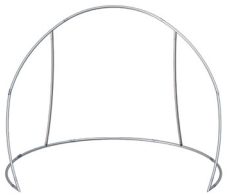
# Kit Assembly

## Step by Step

### Step 1.

Locate the components necessary for assembling your Chip Wall. Assemble your frame in order according to the Labeling Diagram.

Please reference Connection Methods 1 & 2 for more details.



### Step 2.

Apply graphic to Chip Wall. For ease of installation, pull the fabric cover over the top of the frame while the frame rests flat on the floor. Zip to enclose.

