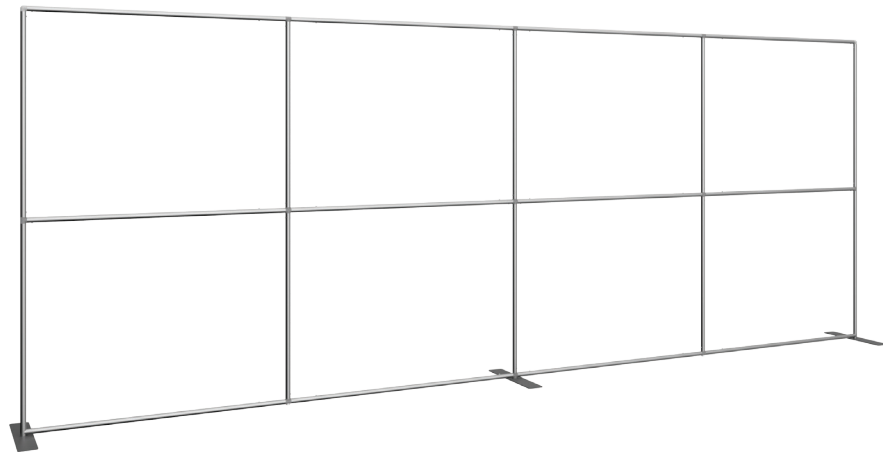


Formulate 20' Straight Frame Kit

FMLT-WS20-30MM-F

Formulate® is a collection of sophisticated, ergonomically designed exhibit booths. Formulate combines state-of-the-art zipper pillowcase dye-sublimated fabric coverings with advanced lightweight aluminum structures to provide unique design, functionality, and style. The excellence of the Formulate line of displays, hanging structures and products is simply unmatched. Stretch fabric graphics are hand-sewn, durable and dry-cleanable.



features and benefits:

- State-of-the-art 30mm aluminum tube frame with snap button assembly
- Easy to store and ship
- Quick to set up
- Pillowcase graphic sold separately
- Kit includes: one frame with stabilizing bases and snap button connectors
- Lifetime hardware warranty against manufacturer defects

dimensions:

Hardware

Assembled unit:
234.75" w x 92" h x 25.59" d
5963mm(w) x 2337mm(h) x 650mm(d)

Approximate weight:
42 lbs / 19 kgs

Graphic

Refer to related graphic template for more information.

Visit:
www.exhibitors-handbook.com/graphic-templates

Shipping

Packing Box(es):
1 Box

54" l x 12" h x 12" d

Approximate shipping weight:
44 lbs / 20 kgs

additional information:

Graphic material:
Dye-sublimated zipper pillowcase fabric, not included

Optional accessories:
Lumina 8-50 watt halogen lighting, literature pocket, stand-off literature rack, stand-off graphic shelf, graphic header, larger freight cases

When included in a larger kit, a different packaging solution will be listed to accommodate all contents of the kit. Individual packaging no longer provided.

We are continually improving and modifying our product range and reserve the right to vary the specifications without prior notice. All dimensions and weights quoted are approximate and we accept no responsibility for variance. E&OE. See Graphic Templates for graphic bleed specifications.

Included In Your Kit

Tools, Components, Connectors & Tubes



6MM HEX KEY x1



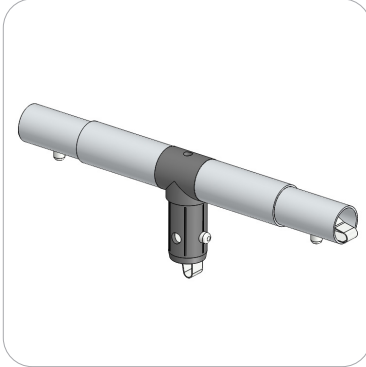
LN114-SCRW x3



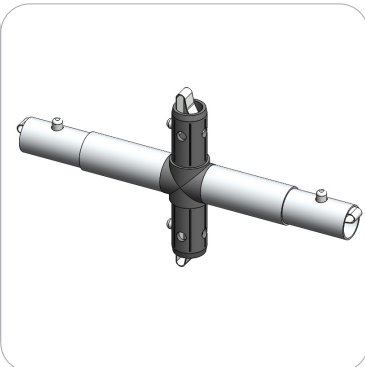
LN114-S2-650 x3



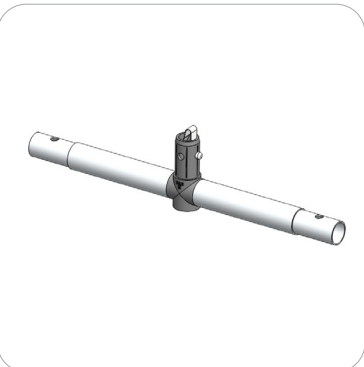
TC-30-90T x2



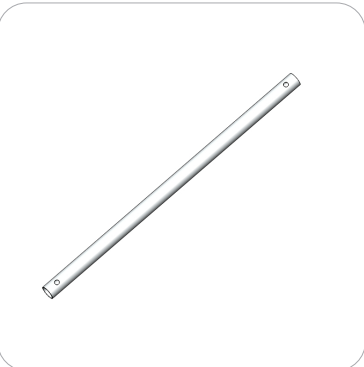
WV20-01-T1 x1



WV20-01-T2 x1



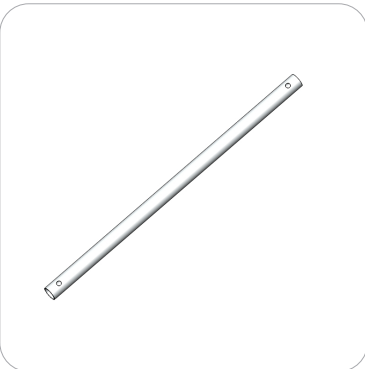
WS-01-T1 x1



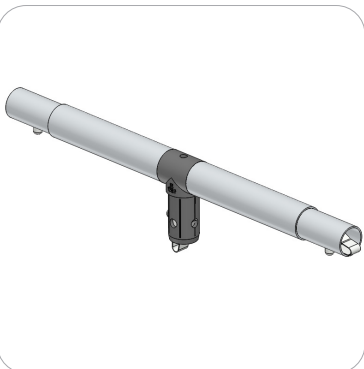
WS10-T2 x12



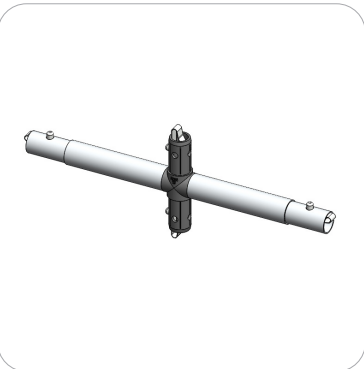
WS10-T6 x2



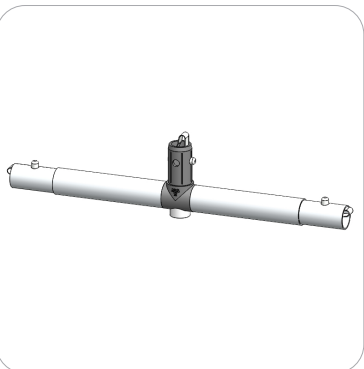
WS10-T1 x8



WS10-T4 x2



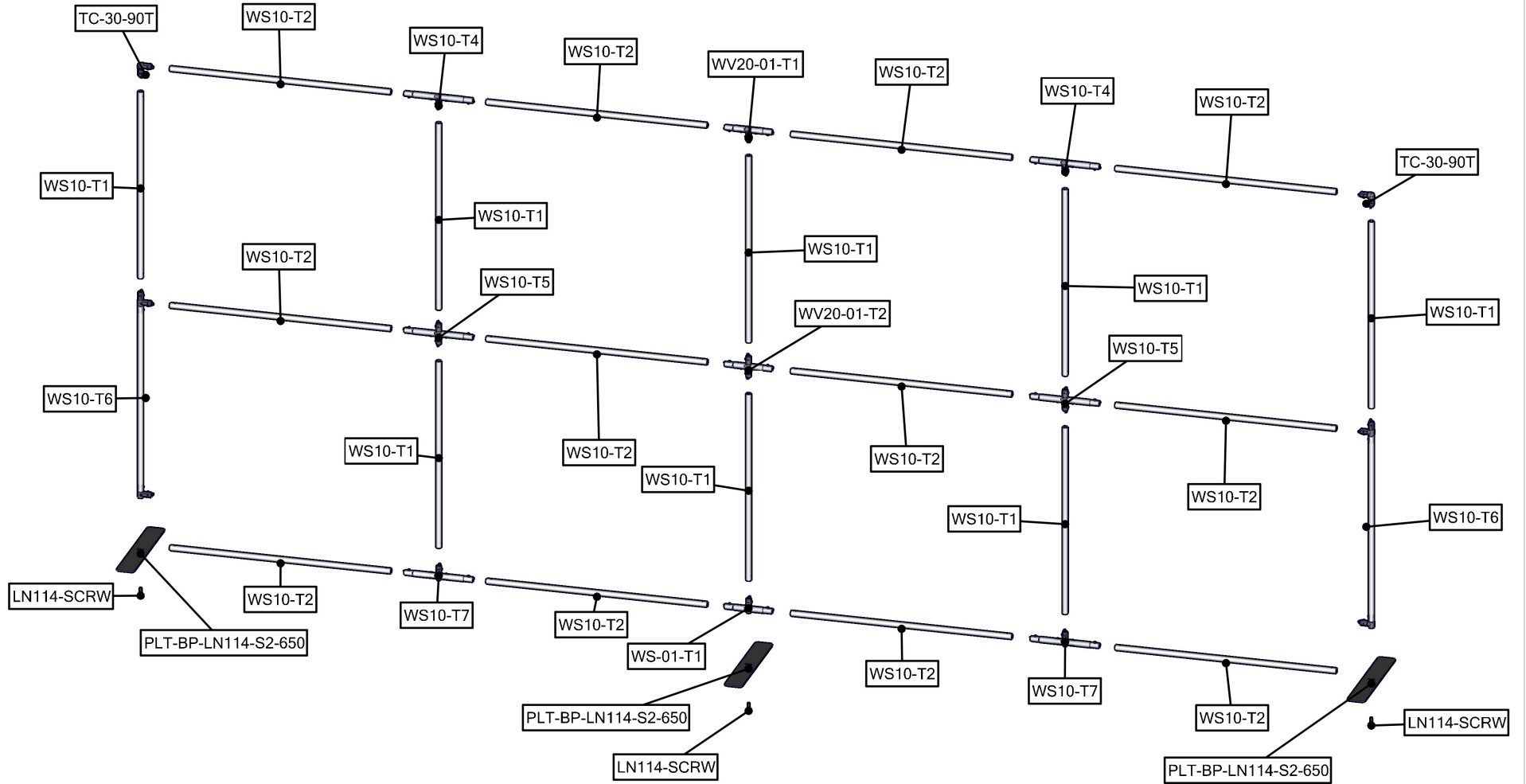
WS10-T5 x2



WS10-T7 x2

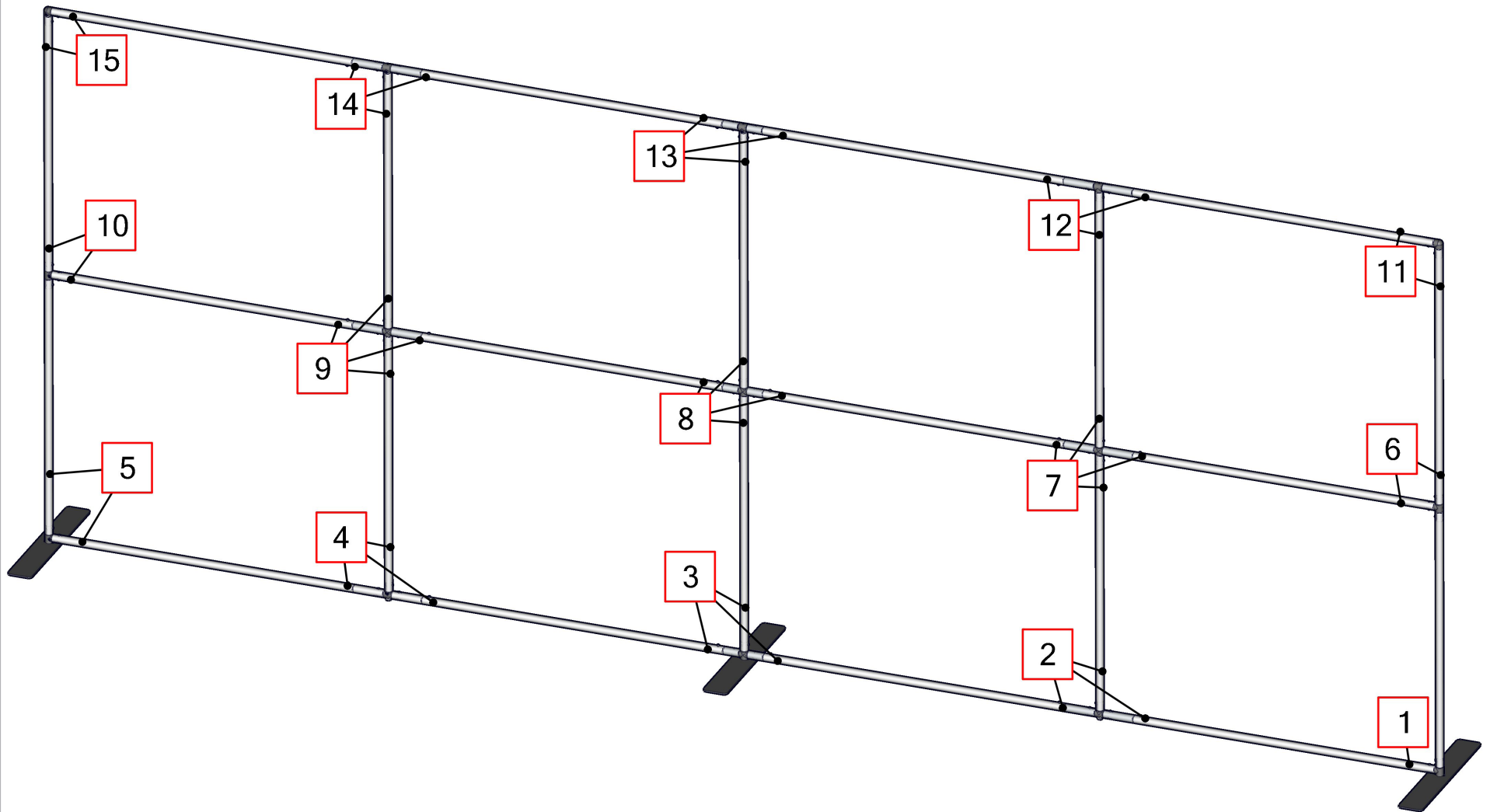
Exploded View

FMLT-WS20-30MM-F



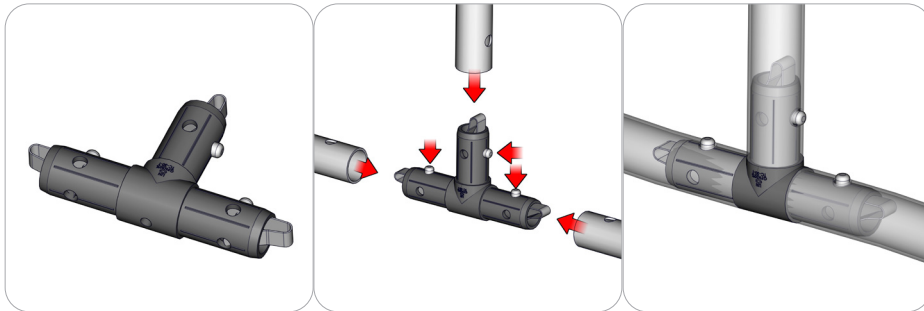
Labeling Diagram

FMLT-WS20-30MM-F



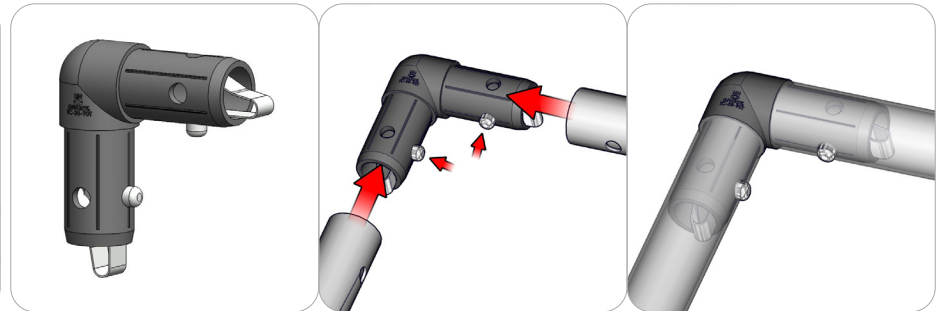
Connection Methods

Connection Method 1: TC-30-T



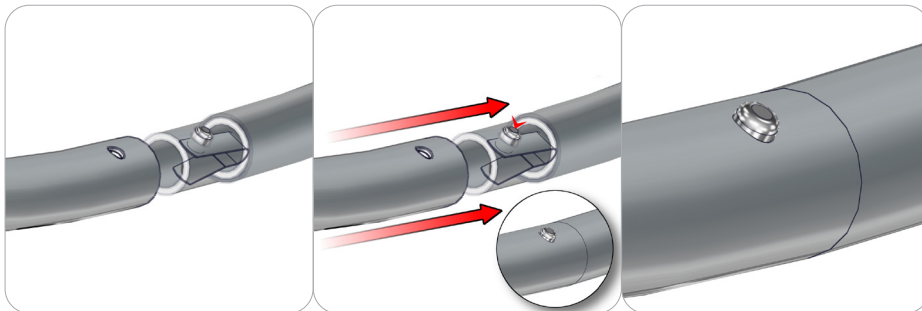
Take the plastic connector and make sure the snap buttons are in proper position for the frame tube holes. Simply press the snap button with your thumb and carefully slide the tube onto the connector. The snap button should pop through. Some twisting may be necessary to assure the snap button has popped all the way through the tube hole. Do not force the connection and be careful with the tube edges, they may be sharp.

Connection Method 2: TC-30-90T



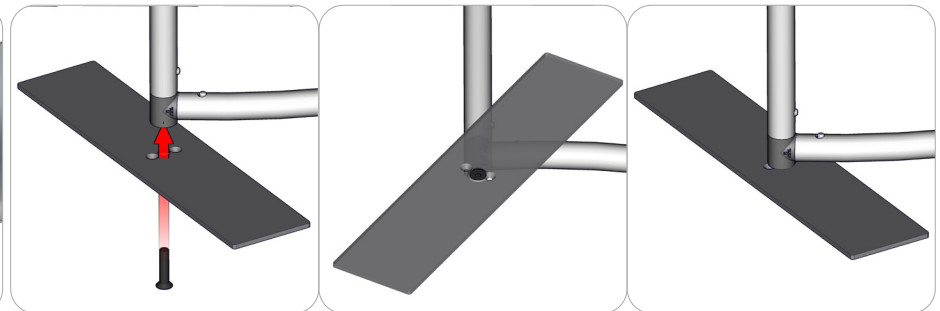
Take the plastic connector and make sure the snap buttons are in proper position for the frame tube holes. Simply press the snap button with your thumb and carefully slide the tube onto the connector. The snap button should pop through. Some twisting may be necessary to assure the snap button has popped all the way through the tube hole. Do not force the connection and be careful with the tube edges, they may be sharp.

Connection Method 3: Swage Tube with Snap Button



Attaching the tube swage design end and snap button is easy - simply press the snap button in and slide it into the next tube. With the tube on, make sure the snap button comes out all the way through the tube hole.

Connection Method 4: PLT-BP-LN114-S2



First, attach the base plate with the M10 screw. Once the base plate is in the desired position, fasten the set screw to hold the insert in place.

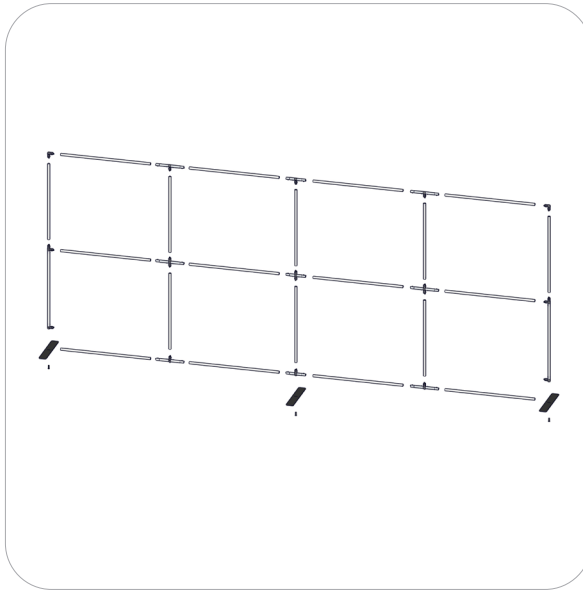
Kit Assembly

Step by Step

Step 1.

Gather the components to build the frame. Use the Exploded View and the Labeling Diagram for part labels.

Reference Connection Method(s) 1, 2, 3 and 4 for more details.



Step 2.

Setup is complete.

