

Tower

Complete Translucent Kit:

33" TOW-B-LT-T-OCX / TOW-S-LT-T-OCX
24" TOW2-B-LT-T-OCX / TOW2-S-LT-T-OCX

Complete Opaque Kit:

33" TOW-B-O-O-OCX / TOW-S-O-OCX
24" TOW2-B-O-OCX / TOW2-S-O-OCX

Frame Only:

TOW-B / TOW-S / TOW2-B / TOW2-B

Lighting Kit Hardware:

TOW-LT-KIT

This cost effective, double-sided, free-standing tower features a sturdy construction and stylish design. The graphics are held under tension in a curved, eye-catching bubble position. Silver or black side extrusions are available and a backlighting kit is available to turn your tower into a light box.



Tower shown with optional lighting kit

We are continually improving and modifying our product range and reserve the right to vary the specifications without prior notice. All dimensions and weights quoted are approximate and we accept no responsibility for variance. E&OE. See Graphic Templates for graphic bleed specifications.

features and benefits:

- Free standing tower
- Double sided bubble panels for maximum visibility
- Choice of silver or black aluminum edge extrusions
- Quick shipping
- Black thermoformed laminate top & bottom plates
- Two part uprights disassemble allowing unit to collapse into popular wheeled case
- Easy, quick graphic changes

dimensions:

Hardware

Assembled unit:

TOW: 36" w x 73.5" h x 17" d
914mm(w) x 1867mm(h) x 432mm(d)
Approximate weight:
32 lbs / 15 kgs

TOW2: 27" w x 73.5" h x 17" d
686mm(w) x 1867mm(h) x 432mm(d)
Approximate weight:
28 lbs / 13 kgs

Weights vary with substrate and quantity

Shipping

Dimensions:

TOW: 1 OCX case
27"l x 40" h x 17" d
686mm(l) x 1016mm(h) x 432mm(d)
Approximate Weight: 64 lbs / 30kgs

TOW2: 1 OCX case
27"l x 40" h x 17" d
686mm(l) x 1016mm(h) x 432mm(d)
Approximate Weight: 60 lbs / 28kgs

Tower items ship in 3 box packages:

Top & bottom base: 37"l x 18" h x 2" d
940mm(l) x 458mm(h) x 51mm(d)

Side extrusions & connectors: 73"l x 3" h x 3" d
1854mm(l) x 77mm(h) x 77mm(d)

Weights vary with substrate and quantity

Graphic

Refer to related graphic template for more information.

Visit:

www.exhibitors-handbook.com/graphic-templates

additional information:

Recommended graphic material:
.040" PVC/polystyrene

Included in optional light box kit:

- 2 hanging hardware
- 4 lights
- 2 light connectors
- 1 light connecting cord
- 1 power cord (8 ft.)
- 1 velcro strip with grommets
- 1 bungee

Tools needed for assembly:
flathead screwdriver

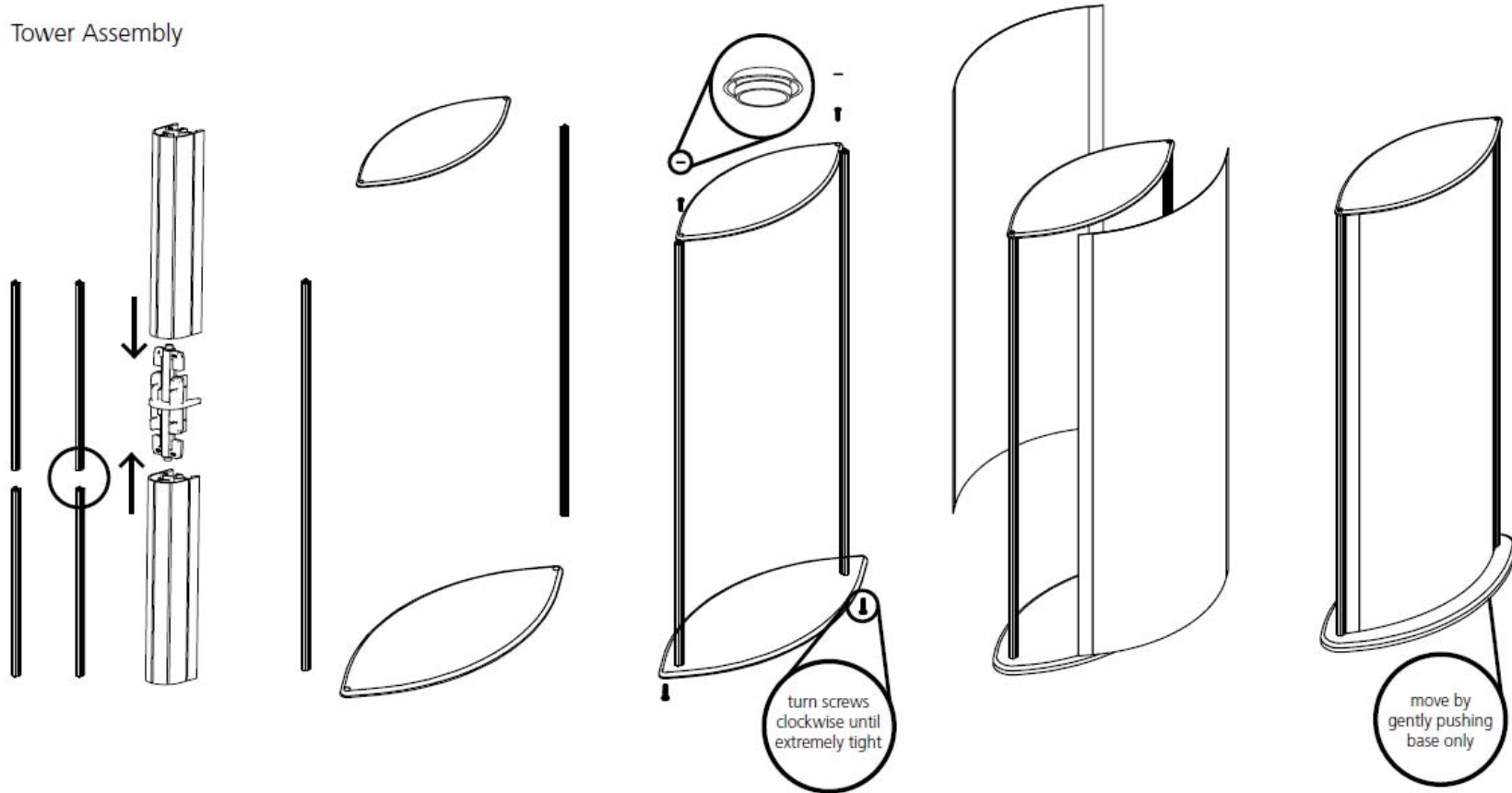
When included in a larger kit, a different packaging solution will be listed to accommodate all contents of the kit. Individual packaging no longer provided.

1 person assembly recommended:



Tower Assembly

Tower Assembly



Light Kit Assembly

