

OCE Expandable Formulate Display Case

OCE

This adjustable roto-molded expandable display case is the perfect protective shipping and/or storage case for all Formulate™ exhibit kits, hanging structures and many more display products. With an adjustable lid and heavy-duty latch, you can adjust the height from 40" in increments to 64". Built-in wheels and a sturdy handle make the case portable and easy to transport.



Case fits with Formulate tubes and graphics



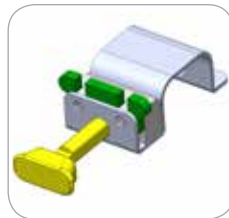
Handle and wheels



Close up of latch



To open: pull up on lock (green)



Step 2: pull out pin (yellow)

We are continually improving and modifying our product range and reserve the right to vary the specifications without prior notice. All dimensions and weights quoted are approximate and we accept no responsibility for variance. E&OE. See Graphic Templates for graphic bleed specifications.

features and benefits:

- Roto-molded expandable display case
- Expands from 40"- 64" in height
- Heavy-duty lock ensures display material is secure during transport
- Built-in wheels and handle
- Stretch graphic wrap allows easy conversion to a counter
- One year limited warranty against manufacturer defects

dimensions:

Hardware

Interior:

13.75" w x 39.63 - 64" h x 11.75" d

Exterior:

16.75" w x 39.88 - 64.25" h x 16.88" d

Weight: 23 lbs / 10.4 kgs

Shipping

Shipping dimensions: (collapsed in box, case only; not expanded):

41" l x 18" h x 17" d

1041mm(l) x 457mm(h) x 432mm(d)

Shipping weight (empty):

24 lbs / 10.88 kgs

Maximum shipping weight:

58 lbs / 26 kgs

*Please note that larger case heights will increase shipping dimensional weight and in turn increase shipping cost.

additional information:

All Formulate™ tabletops, 8', 10' backwalls/exhibit kits and hanging structures with a diameter less than 12' will fit in to one OCE case. All 10' x 20' kits & hanging structures larger than 12' in diameter require multiple cases.

