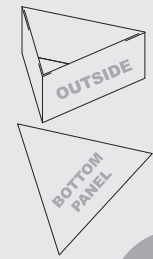


Hanging Structure:
3-Sided Triangle 0803 with bottom
TEMPLATE IS @ 1/10 SIZE
(4) prints to create (1) structure with bottom

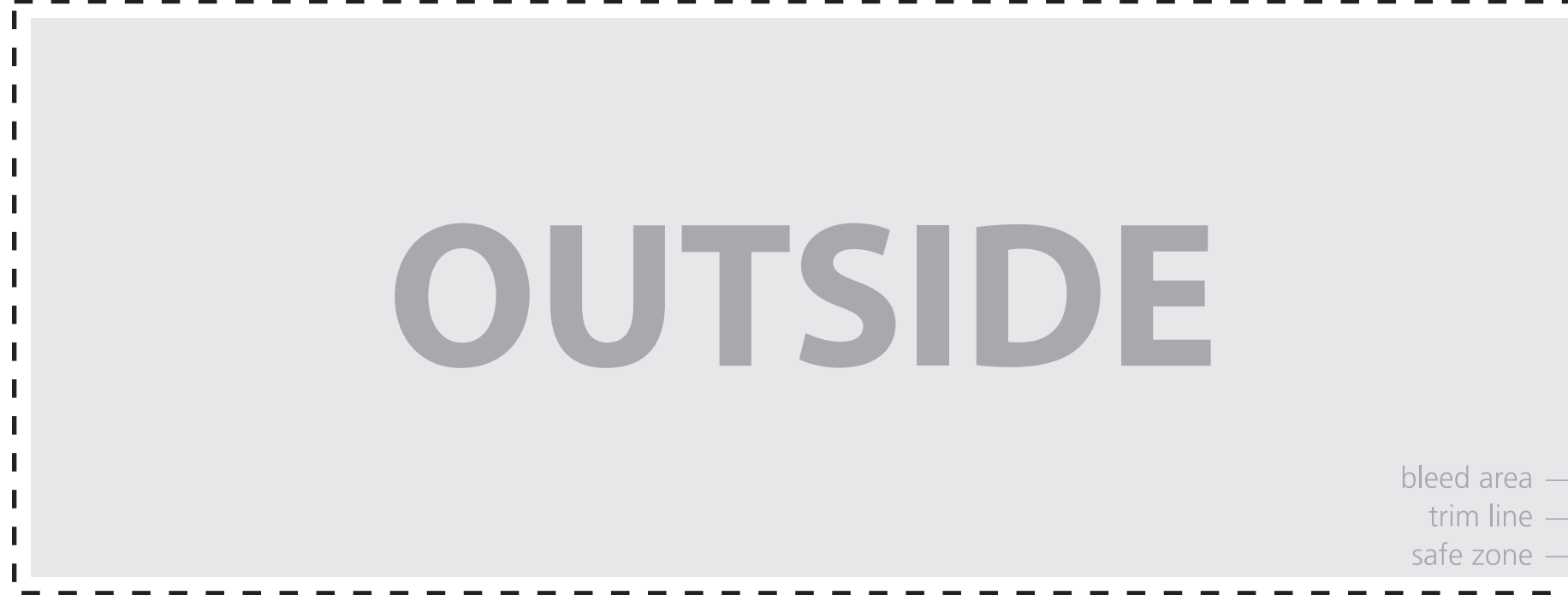
Outside Panel
Total Graphic Area: 106" w X 46" h
Total Visual Area: 96" w X 36" h

Bottom Panel
Total Graphic Area: 106" w X 93.125" h
Total Visual Area: 96" w X 83.125" h

- Please be sure to include the 5" bleed around the perimeter. DO NOT design any critical elements (text, logos, etc.) within 1" of the finished edge (see dotted line in template).
- General Art Guidelines:**
- CMYK Color Mode
 - All Solid Coated Pantone colors should be called out in the art as spot colors
 - Embed all images and support files
 - Resolution must be 1000-1200 ppi @ 1/10 size, 100-120 ppi @ 100% print size
 - All fonts must be created to outlines
 - Do not scale artwork
 - Background color/images must bleed to the edge of artwork
 - Do not use spot colors from template in your artwork as they will not print

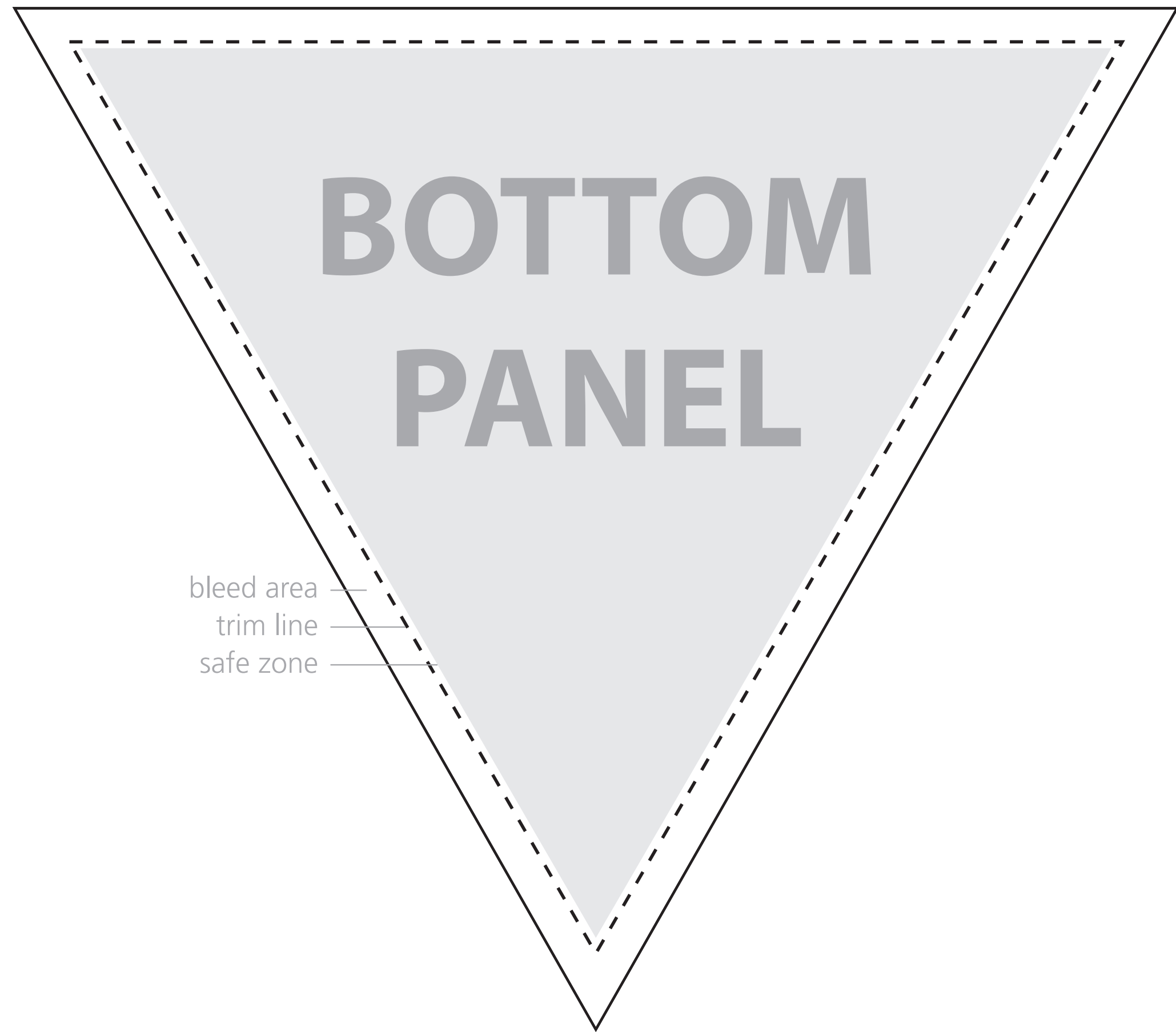


OUTSIDE



106" width + bleed

96" visual width



83.125" visual height

93.125" height + bleed

Hanging Structure:
3-Sided Triangle 0803 with bottom

TEMPLATE IS @ 1/10 SIZE

(4) prints to create (1) structure with bottom

Outside Panel

Total Graphic Area: 106" w X 46" h

Total Visual Area: 96" w X 36" h

Bottom Panel

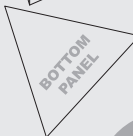
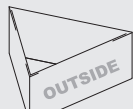
Total Graphic Area: 106" w X 93.125" h

Total Visual Area: 96" w X 83.125" h

Please be sure to include the 5" bleed around the perimeter. DO NOT design any critical elements (text, logos, etc.) within 1" of the finished edge (see dotted line in template).

General Art Guidelines:

- CMYK Color Mode
- All Solid Coated Pantone colors should be called out in the art as spot colors
- Embed all images and support files
- Resolution must be 1000-1200 ppi @ 1/10 size, 100-120 ppi @ 100% print size
- All fonts must be created to outlines
- Do not scale artwork
- Background color/images must bleed to the edge of artwork
- Do not use spot colors from template in your artwork as they will not print



OUTSIDE



OUTSIDE

OUTSIDE

bleed area —
trim line —
safe zone —

BOTTOM PANEL

bleed area

trim line

safe zone

