

**Hanging Structure:**  
Ring 1203 with bottom

**TEMPLATE IS @ 1/10 SIZE**

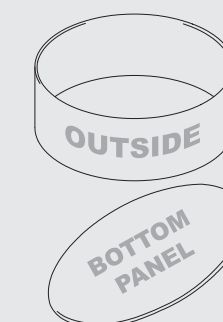
**Outside Panel**  
Total Graphic Area: 462.4" w X 46" h  
Total Visual Area: 452.4" w X 36" h

**Bottom Panel**  
Total Graphic Area: 154" w X 154" h  
Total Visual Area: 144" w X 144" h  
Graphics will have seams running through the middle

Please be sure to include the 5" bleed around the perimeter. DO NOT design any critical elements (text, logos, etc.) within 1" of the finished edge (see dotted line in template).

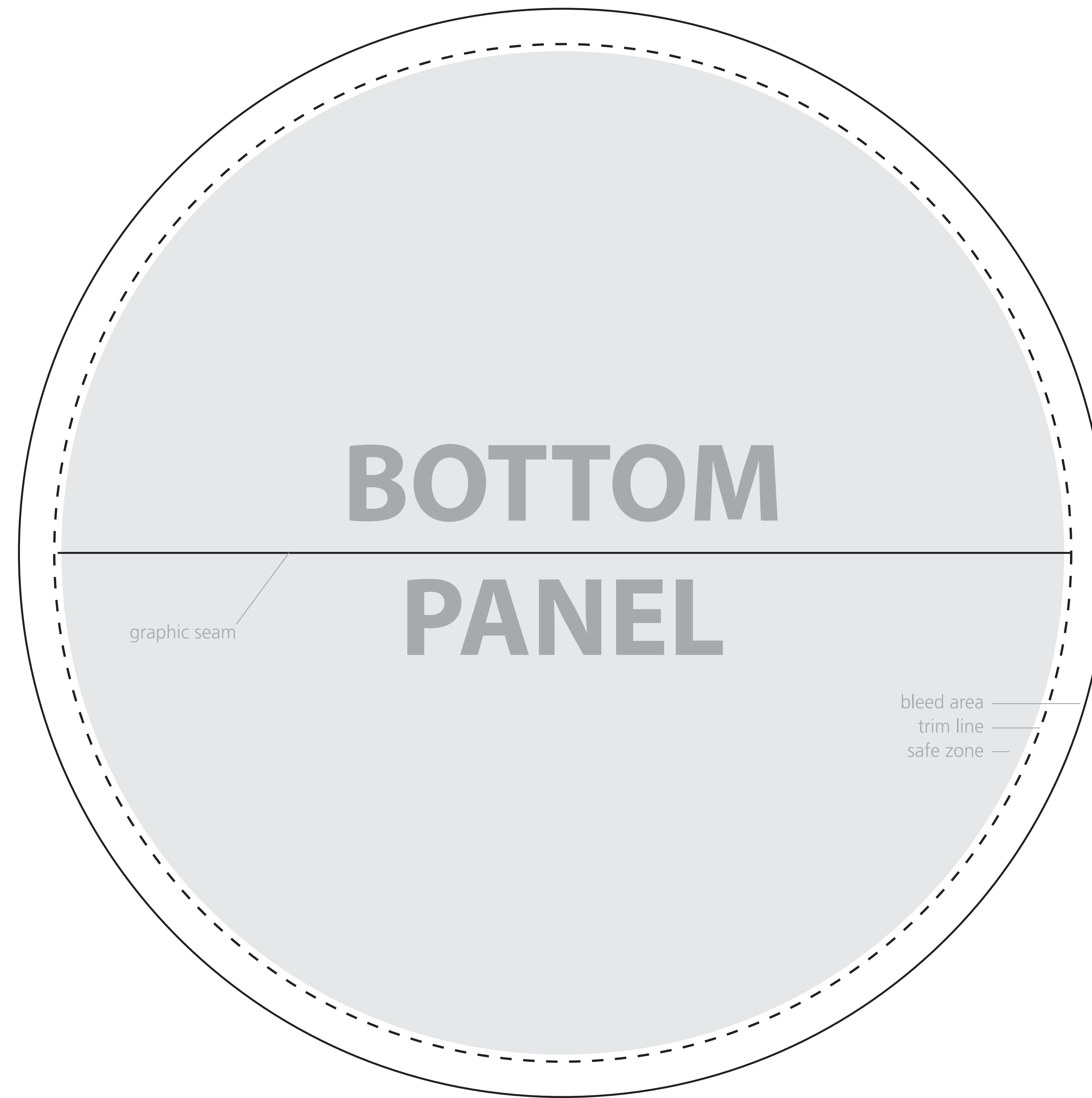
**General Art Guidelines:**

- CMYK Color Mode
- All Solid Coated Pantone colors should be called out in the art as spot colors
- Embed all images and support files
- Resolution must be 1000-1200 ppi @ 1/10 size, 100-120 ppi @ 100% print size
- All fonts must be created to outlines
- Do not scale artwork
- Background color/images must bleed to the edge of artwork
- Do not use spot colors from template in your artwork as they will not print



# OUTSIDE

bleed area  
trim line  
safe zone



144" visual height

154" height + bleed

bleed area  
trim line  
safe zone

**Hanging Structure:  
Ring 1203 with bottom**

TEMPLATE IS @ 1/10 SIZE

**Outside Panel**

Total Graphic Area: 462.4" w X 46" h  
Total Visual Area: 452.4" w X 36" h

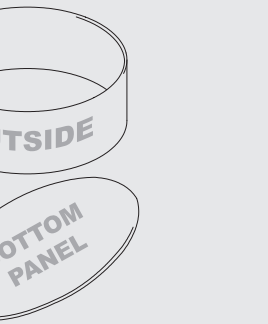
**Bottom Panel**

Total Graphic Area: 154" w X 154" h  
Total Visual Area: 144" w X 144" h  
Graphic will have seam running through the middle

Please be sure to include the 5" bleed around the perimeter. DO NOT design any critical elements (text, logos, etc.) within 1" of the finished edge (see dotted line in template).

**General Art Guidelines:**

- CMYK Color Mode
- All Solid Coated Pantone colors should be called out in the art as spot colors
- Embed all images and support files
- Resolution must be 1000-1200 ppi @ 1/10 size, 100-120 ppi @ 100% print size
- All fonts must be created to outlines
- Do not scale artboard
- Background color/images must bleed to the edge of artboard
- Do not use spot colors from template in your artwork as they will not print



OUTSIDE

bleed area  
trim line  
safe zone

**BOTTOM**

**PANEL**

graphic seam

bleed area  
trim line  
safe zone